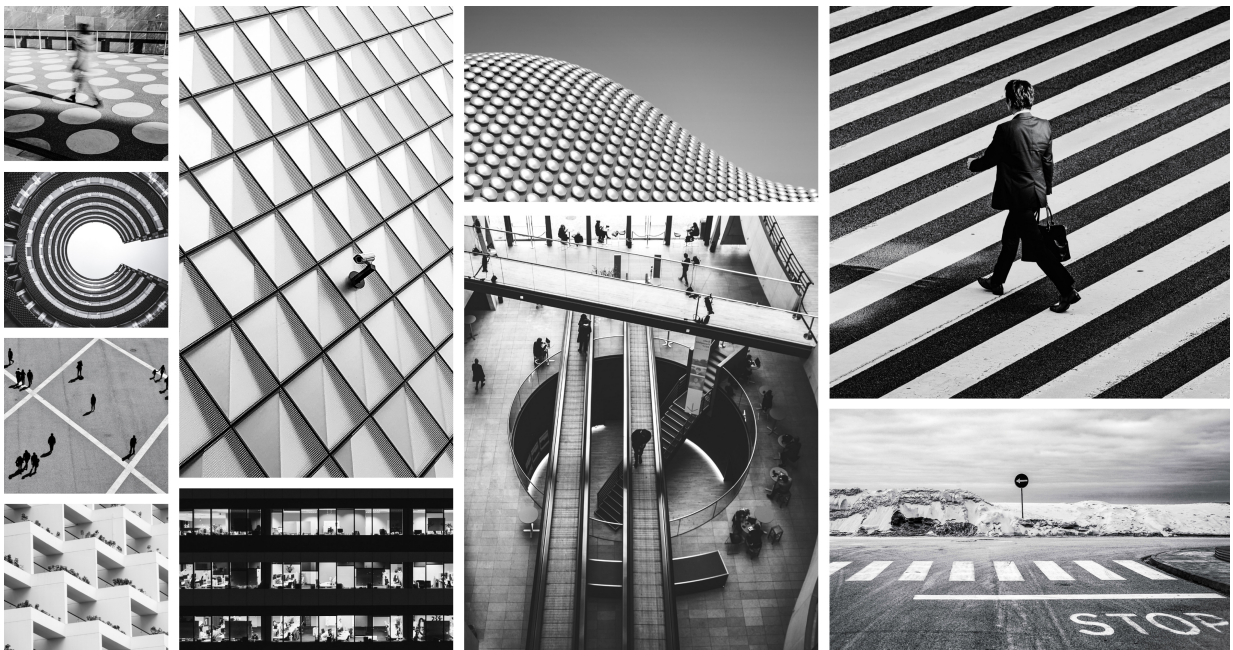




# Illumio Segmentation for Data Centers Open Source Software and Third Party Software Notices 25.2.30

---



## Table of Contents

Legal Notice .....	3
Open Source Software and Third Party Software Notices .....	4

## Legal Notice

Copyright © 2025 Illumio 920 De Guigne Drive, Sunnyvale, CA 94085. All rights reserved.

The content in this documentation is provided for informational purposes only and is provided "as is," without warranty of any kind, expressed or implied, of Illumio. The content in this documentation is subject to change without notice.

### Resources

- [Legal information](#)
- [Trademarks statements](#)
- [Patent statements](#)
- [License statements](#)

### Contact Information

- [Contact Illumio](#)
- [Contact Illumio Legal](#)
- [Contact Illumio Documentation](#)

## Open Source Software and Third Party Software Notices

This document contains licensing information for the Open Source Software and Third Party Software used in Illumio Adaptive Security Platform. This document identifies each component used, the licenses that Illumio understands such components to be available under, and, where available, a link to the source code or licensors' website. The copyright notices and licensing information, as provided in the open-source components, have also been reproduced below.

With respect to the Open Source Software listed in this document, if you have any questions or wish to receive a copy of the source code to which you are entitled under the applicable open source license(s), please contact us at [opensource-requests@illumio.com](mailto:opensource-requests@illumio.com).

## VERSION 25.2.30

Package Name	Version	Type	License URL
boringsssl	20190808	OpenSSL and ISC	<a href="https://github.com/google/boringsssl/blob/fips-20190808/LICENSE">https://github.com/google/boringsssl/blob/fips-20190808/LICENSE</a>
bzip2	1.0.8	BSD-like	<a href="https://github.com/opencor/bzip2/blob/bzip2-1.0.8/LICENSE">https://github.com/opencor/bzip2/blob/bzip2-1.0.8/LICENSE</a>
citus	11.3.0	GNU Affero General Public License	<a href="https://github.com/citusdata/citus/blob/v11.3.0/LICENSE">https://github.com/citusdata/citus/blob/v11.3.0/LICENSE</a>
curl	8.17.0	MIT/X derivative	<a href="https://curl.haxx.se/docs/copyright.html">https://curl.haxx.se/docs/copyright.html</a>
cyrus-sasl	2.1.26	BSD-3-Clause	<a href="https://github.com/cyrusimap/cyrus-sasl/blob/cyrus-sasl-2.1.26/COPYING">https://github.com/cyrusimap/cyrus-sasl/blob/cyrus-sasl-2.1.26/COPYING</a>
glib	2.71.2	LGPL-2.1	<a href="https://github.com/GNOME/glib/blob/2.71.2/COPYING">https://github.com/GNOME/glib/blob/2.71.2/COPYING</a>
haproxy	2.2.34	HAPROXY, GPL-2.0, LGPL-2.1	<a href="https://github.com/haproxy/haproxy/blob/v2.2.0/LICENSE">https://github.com/haproxy/haproxy/blob/v2.2.0/LICENSE</a>
influxdb	2.0.4	MIT	<a href="https://github.com/influxdata/influxdb/blob/v2.0.4/LICENSE">https://github.com/influxdata/influxdb/blob/v2.0.4/LICENSE</a>
libedit	3.1	BSD-3-Clause	<a href="https://github.com/cdesjardins/libedit/blob/master/COPYING">https://github.com/cdesjardins/libedit/blob/master/COPYING</a>
libevent	2.1.12	BSD-3-Clause, BSD, MIT	<a href="https://github.com/libevent/libevent/blob/release-2.1.12-stable/LICENSE">https://github.com/libevent/libevent/blob/release-2.1.12-stable/LICENSE</a>
libfaketime	0.9.8	GPL-2.0	<a href="https://github.com/wolfcw/libfaketime/blob/v0.9.8/COPYING">https://github.com/wolfcw/libfaketime/blob/v0.9.8/COPYING</a>
libffi	3.4.6	MIT	<a href="https://github.com/libffi/libffi/blob/v3.4.6/LICENSE">https://github.com/libffi/libffi/blob/v3.4.6/LICENSE</a>
libmemcached	1.0.18	BSD-3-Clause	<a href="https://bazaar.launchpad.net/~tangent-trunk/libmemcached/1.0/view/head:/COPYING">https://bazaar.launchpad.net/~tangent-trunk/libmemcached/1.0/view/head:/COPYING</a>
memcached	1.6.14	BSD-3-Clause	<a href="https://github.com/memcached/memcached/blob/1.6.14/COPYING">https://github.com/memcached/memcached/blob/1.6.14/COPYING</a> <a href="https://github.com/memcached/memcached/blob/1.6.14/LICENSE.itoa_ljust">https://github.com/memcached/memcached/blob/1.6.14/LICENSE.itoa_ljust</a> <a href="https://github.com/memcached/memcached/blob/1.6.14/LICENSE.bipbuffer">https://github.com/memcached/memcached/blob/1.6.14/LICENSE.bipbuffer</a>
nginx	1.20.2	BSD-2-Clause	<a href="https://nginx.org/LICENSE">https://nginx.org/LICENSE</a>
passenger (nginx)	6.0.20	MIT	<a href="https://github.com/phusion/passenger/blob/release-6.0.20/LICENSE">https://github.com/phusion/passenger/blob/release-6.0.20/LICENSE</a>
pcre (haproxy,nginx)	8.43	BSD-3-Clause	<a href="http://www.pcre.org/licence.txt">http://www.pcre.org/licence.txt</a>
pgbackrest	2.39	MIT	<a href="https://github.com/pgbackrest/pgbackrest/blob/release/2.39/LICENSE">https://github.com/pgbackrest/pgbackrest/blob/release/2.39/LICENSE</a>
postgresql	15.14	BSD-like	<a href="https://www.postgresql.org/about/licence/">https://www.postgresql.org/about/licence/</a>
postgresql-hll	2.18	Apache 2.0	<a href="https://github.com/citusdata/postgresql-hll/blob/v2.18/LICENSE">https://github.com/citusdata/postgresql-hll/blob/v2.18/LICENSE</a>
postgresql-topn	2.6.0	GNU Affero Public License	<a href="https://github.com/citusdata/postgresql-topn/blob/v2.6.0/LICENSE">https://github.com/citusdata/postgresql-topn/blob/v2.6.0/LICENSE</a>
redis	7.4.6	BSD-3-Clause	<a href="https://github.com/redis/redis/blob/7.4.6/COPYING">https://github.com/redis/redis/blob/7.4.6/COPYING</a>
ruby	3.3.9	BSD-2-Clause	<a href="https://github.com/ruby/ruby/blob/v3_3_9/BSDDL">https://github.com/ruby/ruby/blob/v3_3_9/BSDDL</a> <a href="https://github.com/ruby/ruby/blob/v3_3_9/LEGAL">https://github.com/ruby/ruby/blob/v3_3_9/LEGAL</a> <a href="https://github.com/ruby/ruby/blob/v3_3_9/COPYING">https://github.com/ruby/ruby/blob/v3_3_9/COPYING</a>
slony1	2.2.10	Postgres License	<a href="https://git.postgresql.org/gitweb/?p=slony1-engine.git&amp;a=blob&amp;f=COPYRIGHT">https://git.postgresql.org/gitweb/?p=slony1-engine.git&amp;a=blob&amp;f=COPYRIGHT</a>
slz (haproxy)	1.0.0	MIT/X derivative	<a href="https://github.com/wtarreau/libslz/blob/v1.0.0/LICENSE">https://github.com/wtarreau/libslz/blob/v1.0.0/LICENSE</a>
syslog-ng	3.15.1	LGPL-2.1	<a href="https://github.com/syslog-ng/syslog-ng/blob/syslog-ng-3.15.1/COPYING">https://github.com/syslog-ng/syslog-ng/blob/syslog-ng-3.15.1/COPYING</a>
telegraf	1.17.3	MIT	<a href="https://github.com/influxdata/telegraf/blob/v1.17.3/LICENSE">https://github.com/influxdata/telegraf/blob/v1.17.3/LICENSE</a>
zlib (nginx)	1.2.11	Zlib	<a href="https://github.com/madler/zlib/blob/v1.2.11/README">https://github.com/madler/zlib/blob/v1.2.11/README</a>
zstd	1.5.0	BSD	<a href="https://github.com/facebook/zstd/blob/v1.5.0/LICENSE">https://github.com/facebook/zstd/blob/v1.5.0/LICENSE</a>
<b>BUNDLED GEMS</b>			
actioncable	6.1.7.10	MIT	<a href="https://github.com/rails/rails/tree/v6.1.7.10/actioncable">https://github.com/rails/rails/tree/v6.1.7.10/actioncable</a> <a href="https://github.com/rails/rails/blob/v6.1.7.10/actioncable/CHANGELOG.md">https://github.com/rails/rails/blob/v6.1.7.10/actioncable/CHANGELOG.md</a> <a href="https://api.rubyonrails.org/v6.1.7.10/">https://api.rubyonrails.org/v6.1.7.10/</a> <a href="https://rubyonrails.org">https://rubyonrails.org</a>
actionmailbox	6.1.7.10	MIT	<a href="https://github.com/rails/rails/tree/v6.1.7.10/actionmailbox">https://github.com/rails/rails/tree/v6.1.7.10/actionmailbox</a> <a href="https://github.com/rails/rails/blob/v6.1.7.10/actionmailbox/CHANGELOG.md">https://github.com/rails/rails/blob/v6.1.7.10/actionmailbox/CHANGELOG.md</a> <a href="https://api.rubyonrails.org/v6.1.7.10/">https://api.rubyonrails.org/v6.1.7.10/</a> <a href="https://rubyonrails.org">https://rubyonrails.org</a>
actionmailer	6.1.7.10	MIT	<a href="https://github.com/rails/rails/tree/v6.1.7.10/actionmailer">https://github.com/rails/rails/tree/v6.1.7.10/actionmailer</a> <a href="https://github.com/rails/rails/blob/v6.1.7.10/actionmailer/CHANGELOG.md">https://github.com/rails/rails/blob/v6.1.7.10/actionmailer/CHANGELOG.md</a> <a href="https://api.rubyonrails.org/v6.1.7.10/">https://api.rubyonrails.org/v6.1.7.10/</a> <a href="https://rubyonrails.org">https://rubyonrails.org</a>

actionpack	6.1.7.10	MIT	<a href="https://github.com/rails/rails/tree/v6.1.7.10/actionpack">https://github.com/rails/rails/tree/v6.1.7.10/actionpack</a> <a href="https://github.com/rails/rails/blob/v6.1.7.10/actionpack/CHANGELOG.md">https://github.com/rails/rails/blob/v6.1.7.10/actionpack/CHANGELOG.md</a> <a href="https://api.rubyonrails.org/v6.1.7.10/">https://api.rubyonrails.org/v6.1.7.10/</a> <a href="https://rubyonrails.org">https://rubyonrails.org</a>
actiontext	6.1.7.10	MIT	<a href="https://github.com/rails/rails/tree/v6.1.7.10/actiontext">https://github.com/rails/rails/tree/v6.1.7.10/actiontext</a> <a href="https://github.com/rails/rails/blob/v6.1.7.10/actiontext/CHANGELOG.md">https://github.com/rails/rails/blob/v6.1.7.10/actiontext/CHANGELOG.md</a> <a href="https://api.rubyonrails.org/v6.1.7.10/">https://api.rubyonrails.org/v6.1.7.10/</a> <a href="https://rubyonrails.org">https://rubyonrails.org</a>
actionview	6.1.7.10	MIT	<a href="https://github.com/rails/rails/tree/v6.1.7.10/actionview">https://github.com/rails/rails/tree/v6.1.7.10/actionview</a> <a href="https://github.com/rails/rails/blob/v6.1.7.10/actionview/CHANGELOG.md">https://github.com/rails/rails/blob/v6.1.7.10/actionview/CHANGELOG.md</a> <a href="https://api.rubyonrails.org/v6.1.7.10/">https://api.rubyonrails.org/v6.1.7.10/</a> <a href="https://rubyonrails.org">https://rubyonrails.org</a>
activejob	6.1.7.10	MIT	<a href="https://github.com/rails/rails/tree/v6.1.7.10/activejob">https://github.com/rails/rails/tree/v6.1.7.10/activejob</a> <a href="https://github.com/rails/rails/blob/v6.1.7.10/activejob/CHANGELOG.md">https://github.com/rails/rails/blob/v6.1.7.10/activejob/CHANGELOG.md</a> <a href="https://api.rubyonrails.org/v6.1.7.10/">https://api.rubyonrails.org/v6.1.7.10/</a> <a href="https://rubyonrails.org">https://rubyonrails.org</a>
activemodel	6.1.7.10	MIT	<a href="https://github.com/rails/rails/tree/v6.1.7.10/activemodel">https://github.com/rails/rails/tree/v6.1.7.10/activemodel</a> <a href="https://github.com/rails/rails/blob/v6.1.7.10/activemodel/CHANGELOG.md">https://github.com/rails/rails/blob/v6.1.7.10/activemodel/CHANGELOG.md</a> <a href="https://api.rubyonrails.org/v6.1.7.10/">https://api.rubyonrails.org/v6.1.7.10/</a> <a href="https://rubyonrails.org">https://rubyonrails.org</a>
activerecord	6.1.7.10	MIT	<a href="https://github.com/rails/rails/tree/v6.1.7.10/activerecord">https://github.com/rails/rails/tree/v6.1.7.10/activerecord</a> <a href="https://github.com/rails/rails/blob/v6.1.7.10/activerecord/CHANGELOG.md">https://github.com/rails/rails/blob/v6.1.7.10/activerecord/CHANGELOG.md</a> <a href="https://api.rubyonrails.org/v6.1.7.10/">https://api.rubyonrails.org/v6.1.7.10/</a> <a href="https://rubyonrails.org">https://rubyonrails.org</a>
activerecord-session_store	2.0.0	MIT	<a href="https://github.com/rails/activerecord-session_store">https://github.com/rails/activerecord-session_store</a>
activestorage	6.1.7.10	MIT	<a href="https://github.com/rails/rails/tree/v6.1.7.10/activestorage">https://github.com/rails/rails/tree/v6.1.7.10/activestorage</a> <a href="https://github.com/rails/rails/blob/v6.1.7.10/activestorage/CHANGELOG.md">https://github.com/rails/rails/blob/v6.1.7.10/activestorage/CHANGELOG.md</a> <a href="https://api.rubyonrails.org/v6.1.7.10/">https://api.rubyonrails.org/v6.1.7.10/</a> <a href="https://rubyonrails.org">https://rubyonrails.org</a>
activesupport	6.1.7.10	MIT	<a href="https://github.com/rails/rails/tree/v6.1.7.10/activesupport">https://github.com/rails/rails/tree/v6.1.7.10/activesupport</a> <a href="https://github.com/rails/rails/blob/v6.1.7.10/activesupport/CHANGELOG.md">https://github.com/rails/rails/blob/v6.1.7.10/activesupport/CHANGELOG.md</a> <a href="https://api.rubyonrails.org/v6.1.7.10/">https://api.rubyonrails.org/v6.1.7.10/</a> <a href="https://rubyonrails.org">https://rubyonrails.org</a>
addressable	2.8.0	Apache-2.0	<a href="https://github.com/sporkmonger/addressable">https://github.com/sporkmonger/addressable</a>
aes_key_wrap	1.1.0	MIT	<a href="https://github.com/tomdalling/aes_key_wrap">https://github.com/tomdalling/aes_key_wrap</a>
async	1.30.3	MIT	<a href="https://github.com/socketry/async">https://github.com/socketry/async</a>
attr_encrypted	3.1.0	MIT	<a href="http://github.com/attr-encrypted/attr_encrypted">http://github.com/attr-encrypted/attr_encrypted</a>
autoprefixer-rails	10.4.2.0	MIT	<a href="https://github.com/ai/autoprefixer-rails">https://github.com/ai/autoprefixer-rails</a> <a href="https://github.com/ai/autoprefixer-rails/blob/master/CHANGELOG.md">https://github.com/ai/autoprefixer-rails/blob/master/CHANGELOG.md</a>
aws-eventstream	1.3.0	Apache-2.0	<a href="https://github.com/aws/aws-sdk-ruby/tree/version-3/gems/aws-eventstream">https://github.com/aws/aws-sdk-ruby/tree/version-3/gems/aws-eventstream</a> <a href="https://github.com/aws/aws-sdk-ruby/tree/version-3/gems/aws-eventstream/CHANGELOG.md">https://github.com/aws/aws-sdk-ruby/tree/version-3/gems/aws-eventstream/CHANGELOG.md</a> <a href="https://github.com/aws/aws-sdk-ruby">https://github.com/aws/aws-sdk-ruby</a>
aws-msk-iam-sasl-signer	0.1.0	MIT	<a href="https://github.com/bruce-szalwinski-he/aws-msk-iam-sasl-signer-ruby">https://github.com/bruce-szalwinski-he/aws-msk-iam-sasl-signer-ruby</a> <a href="https://github.com/bruce-szalwinski-he/aws-msk-iam-sasl-signer-ruby/releases">https://github.com/bruce-szalwinski-he/aws-msk-iam-sasl-signer-ruby/releases</a>
aws-partitions	1.651.0	Apache-2.0	<a href="https://github.com/aws/aws-sdk-ruby/tree/version-3/gems/aws-partitions">https://github.com/aws/aws-sdk-ruby/tree/version-3/gems/aws-partitions</a> <a href="https://github.com/aws/aws-sdk-ruby/tree/version-3/gems/aws-partitions/CHANGELOG.md">https://github.com/aws/aws-sdk-ruby/tree/version-3/gems/aws-partitions/CHANGELOG.md</a> <a href="https://github.com/aws/aws-sdk-ruby">https://github.com/aws/aws-sdk-ruby</a>
aws-sdk-core	3.193.0	Apache-2.0	<a href="https://github.com/aws/aws-sdk-ruby/tree/version-3/gems/aws-sdk-core">https://github.com/aws/aws-sdk-ruby/tree/version-3/gems/aws-sdk-core</a> <a href="https://github.com/aws/aws-sdk-ruby/tree/version-3/gems/aws-sdk-core/CHANGELOG.md">https://github.com/aws/aws-sdk-ruby/tree/version-3/gems/aws-sdk-core/CHANGELOG.md</a> <a href="https://github.com/aws/aws-sdk-ruby">https://github.com/aws/aws-sdk-ruby</a>
aws-sdk-kafka	1.70.0	Apache-2.0	<a href="https://github.com/aws/aws-sdk-ruby/tree/version-3/gems/aws-sdk-kafka">https://github.com/aws/aws-sdk-ruby/tree/version-3/gems/aws-sdk-kafka</a> <a href="https://github.com/aws/aws-sdk-ruby/tree/version-3/gems/aws-sdk-kafka/CHANGELOG.md">https://github.com/aws/aws-sdk-ruby/tree/version-3/gems/aws-sdk-kafka/CHANGELOG.md</a> <a href="https://github.com/aws/aws-sdk-ruby">https://github.com/aws/aws-sdk-ruby</a>
aws-sdk-kms	1.58.0	Apache-2.0	<a href="https://github.com/aws/aws-sdk-ruby/tree/version-3/gems/aws-sdk-kms">https://github.com/aws/aws-sdk-ruby/tree/version-3/gems/aws-sdk-kms</a> <a href="https://github.com/aws/aws-sdk-ruby/tree/version-3/gems/aws-sdk-kms/CHANGELOG.md">https://github.com/aws/aws-sdk-ruby/tree/version-3/gems/aws-sdk-kms/CHANGELOG.md</a> <a href="https://github.com/aws/aws-sdk-ruby">https://github.com/aws/aws-sdk-ruby</a>
aws-sdk-s3	1.114.0	Apache-2.0	<a href="https://github.com/aws/aws-sdk-ruby/tree/version-3/gems/aws-sdk-s3">https://github.com/aws/aws-sdk-ruby/tree/version-3/gems/aws-sdk-s3</a> <a href="https://github.com/aws/aws-sdk-ruby/tree/version-3/gems/aws-sdk-s3">https://github.com/aws/aws-sdk-ruby/tree/version-3/gems/aws-sdk-s3</a>

			<a href="#">s3/CHANGELOG.md</a>
aws-sdk-sqs	1.51.1	Apache-2.0	<a href="https://github.com/aws/aws-sdk-ruby">https://github.com/aws/aws-sdk-ruby</a> <a href="https://github.com/aws/aws-sdk-ruby/tree/version-3/gems/aws-sdk-sqs">https://github.com/aws/aws-sdk-ruby/tree/version-3/gems/aws-sdk-sqs</a> <a href="https://github.com/aws/aws-sdk-ruby/tree/version-3/gems/aws-sdk-sqs/CHANGELOG.md">https://github.com/aws/aws-sdk-ruby/tree/version-3/gems/aws-sdk-sqs/CHANGELOG.md</a>
aws-sigv4	1.8.0	Apache-2.0	<a href="https://github.com/aws/aws-sdk-ruby">https://github.com/aws/aws-sdk-ruby</a> <a href="https://github.com/aws/aws-sdk-ruby/tree/version-3/gems/aws-sigv4">https://github.com/aws/aws-sdk-ruby/tree/version-3/gems/aws-sigv4</a> <a href="https://github.com/aws/aws-sdk-ruby/tree/version-3/gems/aws-sigv4/CHANGELOG.md">https://github.com/aws/aws-sdk-ruby/tree/version-3/gems/aws-sigv4/CHANGELOG.md</a>
bcrypt	3.1.18	MIT	<a href="https://github.com/bcrypt-ruby/bcrypt-ruby">https://github.com/bcrypt-ruby/bcrypt-ruby</a>
bindata	2.4.10	Ruby	<a href="https://github.com/dmendl/bindata">https://github.com/dmendl/bindata</a>
bootstrap-sass	3.4.1	MIT	<a href="https://github.com/twbs/bootstrap-sass">https://github.com/twbs/bootstrap-sass</a>
builder	3.2.4	MIT	<a href="http://onestepback.org">http://onestepback.org</a>
chargebee	2.16.0	MIT	<a href="https://apidocs.chargebee.com/api/docs?lang=ruby">https://apidocs.chargebee.com/api/docs?lang=ruby</a>
chunky_png	1.4.0	MIT	<a href="https://github.com/wvanbergen/chunky_png">https://github.com/wvanbergen/chunky_png</a> <a href="https://github.com/wvanbergen/chunky_png/wiki">https://github.com/wvanbergen/chunky_png/wiki</a>
concurrent-ruby	1.3.4	MIT	<a href="https://github.com/ruby-concurrency/concurrent-ruby">https://github.com/ruby-concurrency/concurrent-ruby</a> <a href="https://github.com/ruby-concurrency/concurrent-ruby/blob/master/CHANGELOG.md">https://github.com/ruby-concurrency/concurrent-ruby/blob/master/CHANGELOG.md</a> <a href="http://www.concurrent-ruby.com">http://www.concurrent-ruby.com</a>
console	1.15.3	MIT	<a href="https://github.com/socketry/console">https://github.com/socketry/console</a>
cookiejar	0.3.4	BSD-2-Clause	<a href="http://alkaline-solutions.com">http://alkaline-solutions.com</a>
cool.io	1.7.1	MIT	<a href="http://coolio.github.com">http://coolio.github.com</a>
crass	1.0.6	MIT	<a href="https://github.com/rgrove/crass/tree/v1.0.6">https://github.com/rgrove/crass/tree/v1.0.6</a> <a href="https://github.com/rgrove/crass/blob/v1.0.6/HISTORY.md">https://github.com/rgrove/crass/blob/v1.0.6/HISTORY.md</a> <a href="https://www.rubydoc.info/gems/crass/1.0.6">https://www.rubydoc.info/gems/crass/1.0.6</a> <a href="https://github.com/rgrove/crass/">https://github.com/rgrove/crass/</a>
curb	0.8.8.2	MIT	<a href="http://curb.rubyforge.org/">http://curb.rubyforge.org/</a>
daemons	1.4.1	MIT	<a href="http://www.rubydoc.info/gems/daemons">http://www.rubydoc.info/gems/daemons</a> <a href="https://github.com/thuehlinger/daemons">https://github.com/thuehlinger/daemons</a>
delayed_job	4.1.10	MIT	<a href="https://github.com/collectiveidea/delayed_job">https://github.com/collectiveidea/delayed_job</a> <a href="https://github.com/collectiveidea/delayed_job/blob/master/CHANGELOG.md">https://github.com/collectiveidea/delayed_job/blob/master/CHANGELOG.md</a> <a href="http://github.com/collectiveidea/delayed_job">http://github.com/collectiveidea/delayed_job</a>
delayed_job_active_record	4.1.7	MIT	<a href="http://github.com/collectiveidea/delayed_job_active_record">http://github.com/collectiveidea/delayed_job_active_record</a>
descendants_tracker	0.0.4	MIT	<a href="https://github.com/dkubb/descendants_tracker">https://github.com/dkubb/descendants_tracker</a>
devise	4.8.1	MIT	<a href="https://github.com/heartcombo/devise">https://github.com/heartcombo/devise</a> <a href="https://github.com/heartcombo/devise/blob/master/CHANGELOG.md">https://github.com/heartcombo/devise/blob/master/CHANGELOG.md</a> <a href="https://rubydoc.info/github/heartcombo/devise">https://rubydoc.info/github/heartcombo/devise</a>
devise-security	0.16.0	MIT	<a href="https://github.com/devise-security/devise-security">https://github.com/devise-security/devise-security</a>
devise-two-factor	4.0.2	MIT	<a href="https://github.com/tinfoil/devise-two-factor">https://github.com/tinfoil/devise-two-factor</a>
devise_invitable	2.0.9	MIT	<a href="https://github.com/scambra/devise_invitable">https://github.com/scambra/devise_invitable</a>
domain_name	0.5.20190701	BSD-2-Clause, BSD-3-Clause, MPL-2.0	<a href="https://github.com/knu/ruby-domain_name">https://github.com/knu/ruby-domain_name</a>
dry-configurable	0.14.0	MIT	<a href="https://github.com/dry-rb/dry-configurable">https://github.com/dry-rb/dry-configurable</a> <a href="https://github.com/dry-rb/dry-configurable/blob/master/CHANGELOG.md">https://github.com/dry-rb/dry-configurable/blob/master/CHANGELOG.md</a> <a href="https://dry-rb.org/gems/dry-configurable">https://dry-rb.org/gems/dry-configurable</a>
dry-container	0.9.0	MIT	<a href="https://github.com/dry-rb/dry-container">https://github.com/dry-rb/dry-container</a> <a href="https://github.com/dry-rb/dry-container/blob/master/CHANGELOG.md">https://github.com/dry-rb/dry-container/blob/master/CHANGELOG.md</a> <a href="https://dry-rb.org/gems/dry-container">https://dry-rb.org/gems/dry-container</a>
dry-core	0.7.1	MIT	<a href="https://github.com/dry-rb/dry-core">https://github.com/dry-rb/dry-core</a> <a href="https://github.com/dry-rb/dry-core/blob/master/CHANGELOG.md">https://github.com/dry-rb/dry-core/blob/master/CHANGELOG.md</a> <a href="https://dry-rb.org/gems/dry-core">https://dry-rb.org/gems/dry-core</a>
dry-inflector	0.2.1	MIT	<a href="https://github.com/dry-rb/dry-inflector">https://github.com/dry-rb/dry-inflector</a> <a href="https://github.com/dry-rb/dry-inflector/blob/master/CHANGELOG.md">https://github.com/dry-rb/dry-inflector/blob/master/CHANGELOG.md</a> <a href="https://dry-rb.org/gems/dry-inflector">https://dry-rb.org/gems/dry-inflector</a>
dry-logic	1.2.0	MIT	<a href="https://github.com/dry-rb/dry-logic">https://github.com/dry-rb/dry-logic</a> <a href="https://github.com/dry-rb/dry-logic/blob/master/CHANGELOG.md">https://github.com/dry-rb/dry-logic/blob/master/CHANGELOG.md</a> <a href="https://dry-rb.org/gems/dry-logic">https://dry-rb.org/gems/dry-logic</a>
dry-types	1.5.1	MIT	<a href="https://github.com/dry-rb/dry-types">https://github.com/dry-rb/dry-types</a> <a href="https://github.com/dry-rb/dry-types/blob/master/CHANGELOG.md">https://github.com/dry-rb/dry-types/blob/master/CHANGELOG.md</a>

			<a href="https://dry-rb.org/gems/dry-types">https://dry-rb.org/gems/dry-types</a>
em-http-request	1.1.7	MIT	<a href="http://github.com/jgrigorik/em-http-request">http://github.com/jgrigorik/em-http-request</a>
em-pg-client	0.3.4.1	MIT	<a href="http://github.com/royalrm/ruby-em-pg-client">http://github.com/royalrm/ruby-em-pg-client</a>
em-resolv-replace	1.1.3	MIT	<a href="http://github.com/mperham/em-resolv-replace">http://github.com/mperham/em-resolv-replace</a>
em-socksify	0.3.2	MIT	<a href="https://github.com/jgrigorik/em-socksify">https://github.com/jgrigorik/em-socksify</a>
em-statsd-ruby	1.0.3	MIT	<a href="https://github.com/Arugin/em-statsd-ruby">https://github.com/Arugin/em-statsd-ruby</a>
em-synchrony	1.0.6	MIT	<a href="http://github.com/jgrigorik/em-synchrony">http://github.com/jgrigorik/em-synchrony</a>
encryptor	3.0.0	MIT	<a href="http://github.com/attr-encrypted/encryptor">http://github.com/attr-encrypted/encryptor</a>
erubi	1.10.0	MIT	<a href="https://github.com/jeremyevans/erubi">https://github.com/jeremyevans/erubi</a> <a href="https://github.com/jeremyevans/erubi/blob/master/CHANGELOG">https://github.com/jeremyevans/erubi/blob/master/CHANGELOG</a>
et-orbi	1.2.11	MIT	<a href="https://github.com/floraison/et-orbi">https://github.com/floraison/et-orbi</a> <a href="https://github.com/floraison/et-orbi/blob/master/CHANGELOG.md">https://github.com/floraison/et-orbi/blob/master/CHANGELOG.md</a>
ethon	0.15.0	MIT	<a href="https://github.com/typhoeus/ethon">https://github.com/typhoeus/ethon</a>
eventmachine	1.2.7	Ruby, GPL-2.0	<a href="http://rubyeventmachine.com">http://rubyeventmachine.com</a>
execjs	2.8.1	MIT	<a href="https://github.com/rails/execjs">https://github.com/rails/execjs</a>
faraday	2.9.0	MIT	<a href="https://github.com/lostisland/faraday">https://github.com/lostisland/faraday</a> <a href="https://github.com/lostisland/faraday/releases/tag/v2.9.0">https://github.com/lostisland/faraday/releases/tag/v2.9.0</a> <a href="https://lostisland.github.io/faraday">https://lostisland.github.io/faraday</a>
faraday-follow_redirects	0.3.0	MIT	<a href="https://github.com/tisba/faraday-follow_redirects">https://github.com/tisba/faraday-follow_redirects</a> <a href="https://github.com/tisba/faraday-follow_redirects/blob/v0.3.0/CHANGELOG.md">https://github.com/tisba/faraday-follow_redirects/blob/v0.3.0/CHANGELOG.md</a> <a href="http://www.rubydoc.info/gems/faraday-follow_redirects/0.3.0">http://www.rubydoc.info/gems/faraday-follow_redirects/0.3.0</a>
faraday-net_http	3.1.0	MIT	<a href="https://github.com/lostisland/faraday-net_http">https://github.com/lostisland/faraday-net_http</a> <a href="https://github.com/lostisland/faraday-net_http/releases/tag/v3.1.0">https://github.com/lostisland/faraday-net_http/releases/tag/v3.1.0</a>
ffi	1.16.3	BSD-3-Clause	<a href="https://github.com/ffi/ffi/">https://github.com/ffi/ffi/</a> <a href="https://github.com/ffi/ffi/blob/master/CHANGELOG.md">https://github.com/ffi/ffi/blob/master/CHANGELOG.md</a> <a href="https://github.com/ffi/ffi/wiki">https://github.com/ffi/ffi/wiki</a>
fiber-local	1.0.0	MIT	<a href="https://github.com/socketry/fiber-local">https://github.com/socketry/fiber-local</a>
fluent-logger	0.9.0	Apache-2.0	<a href="https://github.com/fluent/fluent-logger-ruby">https://github.com/fluent/fluent-logger-ruby</a>
fluent-plugin-http	1.0.1.1	Apache-2.0	<a href="https://github.com/soylent/fluent-plugin-http">https://github.com/soylent/fluent-plugin-http</a>
fluent-plugin-s3	1.7.2	Apache-2.0	<a href="https://github.com/fluent/fluent-plugin-s3">https://github.com/fluent/fluent-plugin-s3</a>
fluentd	1.16.1	Apache-2.0	<a href="https://www.fluentd.org/">https://www.fluentd.org/</a>
fugit	1.11.1	MIT	<a href="https://github.com/floraison/fugit">https://github.com/floraison/fugit</a> <a href="https://github.com/floraison/fugit/blob/master/CHANGELOG.md">https://github.com/floraison/fugit/blob/master/CHANGELOG.md</a>
globalid	1.0.1	MIT	<a href="http://www.rubyonrails.org">http://www.rubyonrails.org</a>
google-protobuf	3.22.5	BSD-3-Clause	<a href="https://github.com/ruby-protobuf/protobuf/tree/v3.22.5/ruby">https://github.com/ruby-protobuf/protobuf/tree/v3.22.5/ruby</a> <a href="https://developers.google.com/protocol-buffers">https://developers.google.com/protocol-buffers</a>
grape	1.6.2	MIT	<a href="https://github.com/ruby-grape/grape/tree/v1.6.2">https://github.com/ruby-grape/grape/tree/v1.6.2</a> <a href="https://github.com/ruby-grape/grape/blob/v1.6.2/CHANGELOG.md">https://github.com/ruby-grape/grape/blob/v1.6.2/CHANGELOG.md</a> <a href="https://www.rubydoc.info/gems/grape/1.6.2">https://www.rubydoc.info/gems/grape/1.6.2</a> <a href="https://github.com/ruby-grape/grape">https://github.com/ruby-grape/grape</a>
grape-entity	0.10.1	MIT	<a href="https://github.com/ruby-grape/grape-entity">https://github.com/ruby-grape/grape-entity</a>
gssapi	1.3.1	MIT	<a href="http://github.com/zenchild/gssapi">http://github.com/zenchild/gssapi</a>
hashie	5.0.0	MIT	<a href="https://github.com/hashie/hashie">https://github.com/hashie/hashie</a> <a href="https://github.com/hashie/hashie/blob/master/CHANGELOG.md">https://github.com/hashie/hashie/blob/master/CHANGELOG.md</a> <a href="https://www.rubydoc.info/gems/hashie">https://www.rubydoc.info/gems/hashie</a>
hashie-forbidden_attributes	0.1.1	MIT	<a href="https://github.com/Maxim-Filimonov/hashie-forbidden_attributes">https://github.com/Maxim-Filimonov/hashie-forbidden_attributes</a>
hireis	0.6.3	BSD-3-Clause	<a href="http://github.com/redis/hireis-rb">http://github.com/redis/hireis-rb</a>
http-cookie	1.0.5	MIT	<a href="https://github.com/sparklemotion/http-cookie">https://github.com/sparklemotion/http-cookie</a>
http_parser.rb	0.8.0	MIT	<a href="https://github.com/tmm1/http_parser.rb">https://github.com/tmm1/http_parser.rb</a>
i18n	1.10.0	MIT	<a href="https://github.com/ruby-i18n/i18n">https://github.com/ruby-i18n/i18n</a> <a href="https://github.com/ruby-i18n/i18n/releases">https://github.com/ruby-i18n/i18n/releases</a> <a href="https://guides.rubyonrails.org/i18n.html">https://guides.rubyonrails.org/i18n.html</a>
influxdb-client	1.16.0	MIT	<a href="https://github.com/influxdata/influxdb-client-ruby">https://github.com/influxdata/influxdb-client-ruby</a> <a href="https://raw.githubusercontent.com/influxdata/influxdb-client-ruby/master/CHANGELOG.md">https://raw.githubusercontent.com/influxdata/influxdb-client-ruby/master/CHANGELOG.md</a>
ipaddr_extensions	1.0.2	MIT	<a href="http://github.com/jamesotron/IPAddrExtensions">http://github.com/jamesotron/IPAddrExtensions</a>
iseq	0.0.3.2	zlib/libpng	<a href="http://github.com/wanabe/iseq">http://github.com/wanabe/iseq</a>
iso	0.2.2	MIT	<a href="http://github.com/tigrish/iso">http://github.com/tigrish/iso</a>
itree	0.1.2	MIT	<a href="http://github.com/hoxworth/itree">http://github.com/hoxworth/itree</a>

jbuilder	2.11.5	MIT	<a href="https://github.com/rails/jbuilder/tree/v2.11.5">https://github.com/rails/jbuilder/tree/v2.11.5</a> <a href="https://github.com/rails/jbuilder/releases/tag/v2.11.5">https://github.com/rails/jbuilder/releases/tag/v2.11.5</a> <a href="https://github.com/rails/jbuilder">https://github.com/rails/jbuilder</a>
jmespath	1.6.1	Apache-2.0	<a href="http://github.com/trevorrowe/jmespath.rb">http://github.com/trevorrowe/jmespath.rb</a>
jquery-rails	4.5.0	MIT	<a href="https://github.com/rails/jquery-rails">https://github.com/rails/jquery-rails</a>
json-jwt	1.16.6	MIT	<a href="https://github.com/nov/json-jwt">https://github.com/nov/json-jwt</a>
json-schema	2.8.1	MIT	<a href="http://github.com/ruby-json-schema/json-schema/tree/master">http://github.com/ruby-json-schema/json-schema/tree/master</a>
json_pure	2.6.2	Ruby	<a href="https://github.com/flori/json">https://github.com/flori/json</a> <a href="https://github.com/flori/json/blob/master/CHANGES.md">https://github.com/flori/json/blob/master/CHANGES.md</a> <a href="http://flori.github.io/json/doc/index.html">http://flori.github.io/json/doc/index.html</a> <a href="http://flori.github.io/json/">http://flori.github.io/json/</a> <a href="http://flori.github.com/json">http://flori.github.com/json</a>
jumphash	0.1.0	MIT	<a href="https://github.com/cdolan/jumphash">https://github.com/cdolan/jumphash</a>
jwt	2.7.1	MIT	<a href="https://github.com/jwt/ruby-jwt/blob/v2.7.1/CHANGELOG.md">https://github.com/jwt/ruby-jwt/blob/v2.7.1/CHANGELOG.md</a> <a href="https://github.com/jwt/ruby-jwt">https://github.com/jwt/ruby-jwt</a>
karafka-rdkafka	0.17.6	MIT	<a href="https://github.com/karafka/karafka-rdkafka">https://github.com/karafka/karafka-rdkafka</a> <a href="https://github.com/karafka/karafka-rdkafka/blob/master/CHANGELOG.md">https://github.com/karafka/karafka-rdkafka/blob/master/CHANGELOG.md</a> <a href="https://karafka.io/docs">https://karafka.io/docs</a> <a href="https://karafka.io">https://karafka.io</a>
loofah	2.19.1	MIT	<a href="https://github.com/flavorjones/loofah">https://github.com/flavorjones/loofah</a> <a href="https://github.com/flavorjones/loofah/blob/main/CHANGELOG.md">https://github.com/flavorjones/loofah/blob/main/CHANGELOG.md</a> <a href="https://www.rubydoc.info/gems/loofah/">https://www.rubydoc.info/gems/loofah/</a>
lru_redux	1.1.0	MIT	<a href="https://github.com/SamSaffron/lru_redux">https://github.com/SamSaffron/lru_redux</a>
macaddr	1.7.2	Ruby	<a href="https://github.com/ahoward/macaddr">https://github.com/ahoward/macaddr</a>
mail	2.7.1	MIT	<a href="https://github.com/mikel/mail">https://github.com/mikel/mail</a>
marcel	1.0.2	MIT, Apache-2.0	<a href="https://github.com/rails/marcel">https://github.com/rails/marcel</a>
matrix	0.4.2	Ruby, BSD-2-Clause	<a href="https://github.com/ruby/matrix">https://github.com/ruby/matrix</a>
memcached	1.8.0.1	Academic Free License 3.0 (AFL-3.0)	<a href="http://evan.github.com/evan/memcached/">http://evan.github.com/evan/memcached/</a>
method_source	1.0.0	MIT	<a href="http://banisterfiend.wordpress.com">http://banisterfiend.wordpress.com</a>
mime-types	3.4.1	MIT	<a href="https://github.com/mime-types/ruby-mime-types/">https://github.com/mime-types/ruby-mime-types/</a> <a href="https://github.com/mime-types/ruby-mime-types/blob/master/History.md">https://github.com/mime-types/ruby-mime-types/blob/master/History.md</a>
mime-types-data	3.2022.0105	MIT	<a href="https://github.com/mime-types/mime-types-data/">https://github.com/mime-types/mime-types-data/</a>
mini_mime	1.1.2	MIT	<a href="https://github.com/discourse/mini_mime">https://github.com/discourse/mini_mime</a>
mini_portile2	2.8.8	MIT	<a href="https://github.com/flavorjones/mini_portile/blob/main/CHANGELOG.md">https://github.com/flavorjones/mini_portile/blob/main/CHANGELOG.md</a> <a href="https://github.com/flavorjones/mini_portile">https://github.com/flavorjones/mini_portile</a>
minitest	5.15.0	MIT	<a href="https://github.com/seattlerb/minitest">https://github.com/seattlerb/minitest</a>
mono_logger	1.1.2	MIT	<a href="http://github.com/steveklabnik/mono_logger">http://github.com/steveklabnik/mono_logger</a>
msgpack	1.7.1	Apache 2.0	<a href="http://msgpack.org/">http://msgpack.org/</a>
multi_json	1.15.0	MIT	<a href="https://github.com/intridea/multi_json/tree/v1.15.0">https://github.com/intridea/multi_json/tree/v1.15.0</a> <a href="https://github.com/intridea/multi_json/blob/v1.15.0/CHANGELOG.md">https://github.com/intridea/multi_json/blob/v1.15.0/CHANGELOG.md</a> <a href="https://www.rubydoc.info/gems/multi_json/1.15.0">https://www.rubydoc.info/gems/multi_json/1.15.0</a> <a href="https://github.com/intridea/multi_json">https://github.com/intridea/multi_json</a>
mustermann	2.0.2	MIT	<a href="https://github.com/sinatra/mustermann">https://github.com/sinatra/mustermann</a>
mustermann-grape	1.0.1	MIT	<a href="https://github.com/ruby-grape/mustermann-grape">https://github.com/ruby-grape/mustermann-grape</a>
net-imap	0.2.5	Ruby, BSD-2-Clause	<a href="https://github.com/ruby/net-imap">https://github.com/ruby/net-imap</a>
net-ldap	0.16.3	MIT	<a href="http://github.com/ruby-ldap/ruby-net-ldap">http://github.com/ruby-ldap/ruby-net-ldap</a>
net-pop	0.1.1	Ruby, BSD-2-Clause	<a href="https://github.com/ruby/net-pop">https://github.com/ruby/net-pop</a>
net-scp	4.1.0	MIT	<a href="https://github.com/net-ssh/net-scp/blob/master/CHANGES.txt">https://github.com/net-ssh/net-scp/blob/master/CHANGES.txt</a> <a href="https://github.com/net-ssh/net-scp">https://github.com/net-ssh/net-scp</a>
net-sftp	4.0.0	MIT	<a href="https://github.com/net-ssh/net-sftp">https://github.com/net-ssh/net-sftp</a>
net-smtp	0.3.1	Ruby, BSD-2-Clause	<a href="https://github.com/ruby/net-smtp">https://github.com/ruby/net-smtp</a>
net-ssh	7.2.3	MIT	<a href="https://github.com/net-ssh/net-ssh/blob/master/CHANGES.txt">https://github.com/net-ssh/net-ssh/blob/master/CHANGES.txt</a> <a href="https://github.com/net-ssh/net-ssh">https://github.com/net-ssh/net-ssh</a>
net_http_unix	0.2.2	Apache 2.0	<a href="http://github.com/puppetlabs/net_http_unix">http://github.com/puppetlabs/net_http_unix</a>

netaddr	1.5.3	Apache-2.0	
netrc	0.11.0	MIT	<a href="https://github.com/geemus/netrc">https://github.com/geemus/netrc</a>
nio4r	2.5.8	MIT	<a href="https://github.com/socketry/nio4r/tree/v2.5.8">https://github.com/socketry/nio4r/tree/v2.5.8</a> <a href="https://github.com/socketry/nio4r/blob/master/CHANGES.md">https://github.com/socketry/nio4r/blob/master/CHANGES.md</a> <a href="https://www.rubydoc.info/gems/nio4r/2.5.8">https://www.rubydoc.info/gems/nio4r/2.5.8</a> <a href="https://github.com/socketry/nio4r">https://github.com/socketry/nio4r</a>
nokogiri	1.18.9	MIT	<a href="https://github.com/sparklemotion/nokogiri">https://github.com/sparklemotion/nokogiri</a> <a href="https://nokogiri.org/CHANGELOG.html">https://nokogiri.org/CHANGELOG.html</a> <a href="https://nokogiri.org/rdoc/index.html">https://nokogiri.org/rdoc/index.html</a> <a href="https://nokogiri.org">https://nokogiri.org</a>
oj	3.16.9	MIT	<a href="https://github.com/ohler55/oj">https://github.com/ohler55/oj</a> <a href="https://github.com/ohler55/oj/blob/master/CHANGELOG.md">https://github.com/ohler55/oj/blob/master/CHANGELOG.md</a> <a href="http://www.ohler.com/oj/doc/index.html">http://www.ohler.com/oj/doc/index.html</a> <a href="http://www.ohler.com/oj/">http://www.ohler.com/oj/</a> <a href="http://www.ohler.com/oj">http://www.ohler.com/oj</a>
orm_adapter	0.5.0	MIT	<a href="http://github.com/ianwhite/orm_adapter">http://github.com/ianwhite/orm_adapter</a>
pdf-core	0.9.0	PRAWN, GPL-2.0, GPL-3.0	<a href="http://prawnpdf.org">http://prawnpdf.org</a>
pg	1.2.3.1	BSD-2-Clause	<a href="https://github.com/ged/ruby-pg">https://github.com/ged/ruby-pg</a>
powerhome-resque-status	0.7.0	MIT	<a href="http://github.com/quirkey/resque-status">http://github.com/quirkey/resque-status</a>
prawn	2.4.0	PRAWN, GPL-2.0, GPL-3.0	<a href="http://prawnpdf.org">http://prawnpdf.org</a>
prawn-table	0.2.2	RUBY, GPL-2, GPL-3	<a href="https://github.com/prawnpdf/prawn-table">https://github.com/prawnpdf/prawn-table</a>
public_suffix	4.0.6	MIT	<a href="https://github.com/weppos/publicsuffix-ruby/tree/v4.0.6">https://github.com/weppos/publicsuffix-ruby/tree/v4.0.6</a> <a href="https://github.com/weppos/publicsuffix-ruby/blob/master/CHANGELOG.md">https://github.com/weppos/publicsuffix-ruby/blob/master/CHANGELOG.md</a> <a href="https://rubydoc.info/gems/public_suffix/4.0.6">https://rubydoc.info/gems/public_suffix/4.0.6</a> <a href="https://simonecarletti.com/code/publicsuffix-ruby">https://simonecarletti.com/code/publicsuffix-ruby</a>
puma	5.6.9	BSD-3-Clause	<a href="https://github.com/puma/puma">https://github.com/puma/puma</a> <a href="https://github.com/puma/puma/blob/master/History.md">https://github.com/puma/puma/blob/master/History.md</a> <a href="https://puma.io">https://puma.io</a>
querrel	2.0.0	MIT	<a href="https://github.com/meritec/querrel">https://github.com/meritec/querrel</a>
raabro	1.4.0	MIT	<a href="https://github.com/floraison/raabro">https://github.com/floraison/raabro</a>
racc	1.6.0	Ruby, BSD-2-Clause	<a href="https://i.loveruby.net/en/projects/racc/">https://i.loveruby.net/en/projects/racc/</a>
rack	2.2.21	MIT	<a href="https://github.com/rack/rack">https://github.com/rack/rack</a> <a href="https://github.com/rack/rack/blob/master/CHANGELOG.md">https://github.com/rack/rack/blob/master/CHANGELOG.md</a> <a href="https://rubydoc.info/github/rack/rack">https://rubydoc.info/github/rack/rack</a>
rack-accept	0.4.5	MIT	<a href="http://mjjackson.github.com/rack-accept">http://mjjackson.github.com/rack-accept</a>
rack-attack	6.2.2	MIT	<a href="https://github.com/kickstarter/rack-attack">https://github.com/kickstarter/rack-attack</a> <a href="https://github.com/kickstarter/rack-attack/blob/master/CHANGELOG.md">https://github.com/kickstarter/rack-attack/blob/master/CHANGELOG.md</a>
rack-protection	2.2.4	MIT	<a href="https://github.com/sinatra/sinatra/tree/master/rack-protection">https://github.com/sinatra/sinatra/tree/master/rack-protection</a> <a href="https://www.rubydoc.info/gems/rack-protection">https://www.rubydoc.info/gems/rack-protection</a> <a href="http://sinatrarb.com/protection/">http://sinatrarb.com/protection/</a>
rack-test	1.1.0	MIT	<a href="http://github.com/rack-test/rack-test">http://github.com/rack-test/rack-test</a>
rack-timeout	0.7.0	MIT	<a href="https://github.com/zombocom/rack-timeout">https://github.com/zombocom/rack-timeout</a> <a href="https://github.com/zombocom/rack-timeout/blob/v0.7.0/CHANGELOG.md">https://github.com/zombocom/rack-timeout/blob/v0.7.0/CHANGELOG.md</a> <a href="https://rubydoc.info/gems/rack-timeout/0.7.0/">https://rubydoc.info/gems/rack-timeout/0.7.0/</a>
radiustar	0.0.8	CC0-1.0	<a href="http://github.com/pjdavis/radiustar">http://github.com/pjdavis/radiustar</a>
rails	6.1.7.10	MIT	<a href="https://github.com/rails/rails/tree/v6.1.7.10">https://github.com/rails/rails/tree/v6.1.7.10</a> <a href="https://github.com/rails/rails/releases/tag/v6.1.7.10">https://github.com/rails/rails/releases/tag/v6.1.7.10</a> <a href="https://api.rubyonrails.org/v6.1.7.10/">https://api.rubyonrails.org/v6.1.7.10/</a> <a href="https://rubyonrails.org">https://rubyonrails.org</a>
rails-dom-testing	2.0.3	MIT	<a href="https://github.com/rails/rails-dom-testing">https://github.com/rails/rails-dom-testing</a>
rails-html-sanitizer	1.4.4	MIT	<a href="https://github.com/rails/rails-html-sanitizer/tree/v1.4.4">https://github.com/rails/rails-html-sanitizer/tree/v1.4.4</a> <a href="https://github.com/rails/rails-html-sanitizer/blob/v1.4.4/CHANGELOG.md">https://github.com/rails/rails-html-sanitizer/blob/v1.4.4/CHANGELOG.md</a> <a href="https://www.rubydoc.info/gems/rails-html-sanitizer/1.4.4">https://www.rubydoc.info/gems/rails-html-sanitizer/1.4.4</a> <a href="https://github.com/rails/rails-html-sanitizer">https://github.com/rails/rails-html-sanitizer</a>
railties	6.1.7.10	MIT	<a href="https://github.com/rails/rails/tree/v6.1.7.10/railties">https://github.com/rails/rails/tree/v6.1.7.10/railties</a> <a href="https://github.com/rails/rails/blob/v6.1.7.10/railties/CHANGELOG.md">https://github.com/rails/rails/blob/v6.1.7.10/railties/CHANGELOG.md</a> <a href="https://api.rubyonrails.org/v6.1.7.10/">https://api.rubyonrails.org/v6.1.7.10/</a> <a href="https://rubyonrails.org">https://rubyonrails.org</a>

rake	13.0.6	MIT	<a href="https://github.com/ruby/rake/tree/v13.0.6">https://github.com/ruby/rake/tree/v13.0.6</a> <a href="https://github.com/ruby/rake/blob/v13.0.6/History.rdoc">https://github.com/ruby/rake/blob/v13.0.6/History.rdoc</a> <a href="https://ruby.github.io/rake">https://ruby.github.io/rake</a> <a href="https://github.com/ruby/rake">https://github.com/ruby/rake</a>
rbtree	0.4.5	MIT	<a href="http://rbtree.rubyforge.org/">http://rbtree.rubyforge.org/</a>
redis	4.4.0	MIT	<a href="https://github.com/redis/redis-rb/tree/v4.4.0">https://github.com/redis/redis-rb/tree/v4.4.0</a> <a href="https://github.com/redis/redis-rb/blob/master/CHANGELOG.md">https://github.com/redis/redis-rb/blob/master/CHANGELOG.md</a> <a href="https://www.rubydoc.info/gems/redis/4.4.0">https://www.rubydoc.info/gems/redis/4.4.0</a> <a href="https://github.com/redis/redis-rb">https://github.com/redis/redis-rb</a>
redis-namespace	1.11.0	MIT	<a href="https://github.com/resque/redis-namespace/blob/master/CHANGELOG.md">https://github.com/resque/redis-namespace/blob/master/CHANGELOG.md</a> <a href="https://www.rubydoc.info/gems/redis-namespace/1.11.0">https://www.rubydoc.info/gems/redis-namespace/1.11.0</a> <a href="https://github.com/resque/redis-namespace">https://github.com/resque/redis-namespace</a>
redis-rdb	0.1.0	MIT	<a href="https://github.com/nrk/redis-rdb">https://github.com/nrk/redis-rdb</a>
redlock	1.2.2	BSD-2-Clause	<a href="https://github.com/leandromoreira/redlock-rb">https://github.com/leandromoreira/redlock-rb</a>
responders	3.0.1	MIT	<a href="https://github.com/heartcombo/responders">https://github.com/heartcombo/responders</a>
resque	2.6.0	MIT	<a href="https://github.com/resque/resque/blob/master/HISTORY.md">https://github.com/resque/resque/blob/master/HISTORY.md</a> <a href="https://github.com/resque/resque">https://github.com/resque/resque</a>
resque-pool	0.7.1	MIT	<a href="http://github.com/nevans/resque-pool">http://github.com/nevans/resque-pool</a> <a href="https://github.com/resque/resque/blob/master/HISTORY.md">https://github.com/resque/resque/blob/master/HISTORY.md</a>
resque-retry	1.7.6	MIT	<a href="http://github.com/lantins/resque-retry">http://github.com/lantins/resque-retry</a>
resque-scheduler	4.10.2	MIT	<a href="https://github.com/resque/resque-scheduler">https://github.com/resque/resque-scheduler</a>
resque_solo	0.5.0	MIT	<a href="https://github.com/neighborland/resque_solo">https://github.com/neighborland/resque_solo</a>
rest-client	2.0.2	MIT	<a href="https://github.com/rest-client/rest-client">https://github.com/rest-client/rest-client</a>
rexml	3.4.4	BSD-2-Clause	<a href="https://github.com/ruby/rexml/releases/tag/v3.4.4">https://github.com/ruby/rexml/releases/tag/v3.4.4</a> <a href="https://github.com/ruby/rexml">https://github.com/ruby/rexml</a>
rotp	6.2.0	MIT	<a href="https://github.com/mdp/rotp">https://github.com/mdp/rotp</a>
rqrqcode	2.1.1	MIT	<a href="https://github.com/whomwah/rqrqcode/blob/master/CHANGELOG.md">https://github.com/whomwah/rqrqcode/blob/master/CHANGELOG.md</a> <a href="https://github.com/whomwah/rqrqcode">https://github.com/whomwah/rqrqcode</a>
rqrqcode_core	1.2.0	MIT	<a href="https://github.com/whomwah/rqrqcode_core">https://github.com/whomwah/rqrqcode_core</a>
ruby-saml	1.18.1	MIT	<a href="https://github.com/saml-toolkits/ruby-saml">https://github.com/saml-toolkits/ruby-saml</a>
rufus-scheduler	3.6.0	MIT	<a href="http://github.com/jmettraux/rufus-scheduler">http://github.com/jmettraux/rufus-scheduler</a> <a href="http://github.com/jmettraux/rufus-scheduler/blob/master/CHANGELOG.md">http://github.com/jmettraux/rufus-scheduler/blob/master/CHANGELOG.md</a>
saml_idp	0.7.2	LICENSE	<a href="http://github.com/sportngin/saml_idp">http://github.com/sportngin/saml_idp</a>
sassc	2.4.0	MIT	<a href="https://github.com/sass/sassc-ruby">https://github.com/sass/sassc-ruby</a>
sassc-rails	2.1.2	MIT	<a href="https://github.com/sass/sassc-rails">https://github.com/sass/sassc-rails</a>
scanf	1.0.0	BSD-2-Clause	<a href="https://github.com/ruby/scanf">https://github.com/ruby/scanf</a>
serverengine	2.3.2	Apache 2.0	<a href="https://github.com/fluent/serverengine">https://github.com/fluent/serverengine</a>
sigdump	0.2.4	MIT	<a href="https://github.com/frsyuki/sigdump">https://github.com/frsyuki/sigdump</a>
simple_form	5.1.0	MIT	<a href="https://github.com/heartcombo/simple_form">https://github.com/heartcombo/simple_form</a>
sinatra	2.2.4	MIT	<a href="https://github.com/sinatra/sinatra">https://github.com/sinatra/sinatra</a> <a href="https://github.com/sinatra/sinatra/blob/master/CHANGELOG.md">https://github.com/sinatra/sinatra/blob/master/CHANGELOG.md</a> <a href="https://www.rubydoc.info/gems/sinatra">https://www.rubydoc.info/gems/sinatra</a> <a href="http://sinatrarb.com/">http://sinatrarb.com/</a>
sorted_set	1.0.3	BSD-2-Clause	<a href="https://github.com/knu/sorted_set">https://github.com/knu/sorted_set</a> <a href="https://github.com/knu/sorted_set/blob/v1.0.3/CHANGELOG.md">https://github.com/knu/sorted_set/blob/v1.0.3/CHANGELOG.md</a>
sprockets	4.0.3	MIT	<a href="https://github.com/rails/sprockets">https://github.com/rails/sprockets</a>
sprockets-rails	3.4.2	MIT	<a href="https://github.com/rails/sprockets-rails">https://github.com/rails/sprockets-rails</a>
squid	1.4.1	MIT	<a href="https://github.com/fullscreen/squid">https://github.com/fullscreen/squid</a>
standalone_migrations	7.1.1	MIT	<a href="http://github.com/thuss/standalone-migrations">http://github.com/thuss/standalone-migrations</a>
statsd-ruby	1.3.0	MIT	<a href="https://github.com/reinh/statsd">https://github.com/reinh/statsd</a>
strptime	0.2.5	BSD-2-Clause	<a href="https://github.com/nurse/strptime">https://github.com/nurse/strptime</a>
strscan	3.1.0	Ruby, BSD-2-Clause	<a href="https://github.com/ruby/strscan">https://github.com/ruby/strscan</a>
sys-file-system	1.1.9	Artistic 2.0	<a href="https://github.com/djberg96/sys-file-system">https://github.com/djberg96/sys-file-system</a>
systemu	2.6.5	Ruby	<a href="https://github.com/ahoward/systemu">https://github.com/ahoward/systemu</a>
text-table	1.2.4.1	MIT	<a href="https://github.com/aptinio/text-table">https://github.com/aptinio/text-table</a>
thin	1.8.2	GPL-2.0+, Ruby	<a href="https://github.com/macournoyer/thin">https://github.com/macournoyer/thin</a> <a href="https://github.com/macournoyer/thin/blob/master/CHANGELOG">https://github.com/macournoyer/thin/blob/master/CHANGELOG</a>
thin_async	0.3.0	(C)macournoyer	<a href="http://github.com/macournoyer/thin_async">http://github.com/macournoyer/thin_async</a>
thor	1.4.0	MIT	<a href="https://github.com/rails/thor/tree/v1.4.0">https://github.com/rails/thor/tree/v1.4.0</a> <a href="https://github.com/rails/thor/releases/tag/v1.4.0">https://github.com/rails/thor/releases/tag/v1.4.0</a>

thread_safe	0.3.6	Apache-2.0	<a href="http://whatisthor.com/">http://whatisthor.com/</a>
tilt	2.4.0	MIT	<a href="https://github.com/ruby-concurrency/thread_safe">https://github.com/ruby-concurrency/thread_safe</a> <a href="https://github.com/jeremyevans/tilt">https://github.com/jeremyevans/tilt</a> <a href="https://github.com/jeremyevans/tilt/blob/master/CHANGELOG.md">https://github.com/jeremyevans/tilt/blob/master/CHANGELOG.md</a>
timers	4.3.4	MIT	<a href="https://github.com/socketry/timers">https://github.com/socketry/timers</a>
ttfunk	1.7.0	Nonstandard, GPL-2.0, GPL- 3.0	<a href="https://prawnpdf.org">https://prawnpdf.org</a>
typhoeus	1.4.0	MIT	<a href="https://github.com/typhoeus/typhoeus">https://github.com/typhoeus/typhoeus</a>
tzinfo	2.0.6	MIT	<a href="https://github.com/tzinfo/tzinfo/tree/v2.0.6">https://github.com/tzinfo/tzinfo/tree/v2.0.6</a> <a href="https://github.com/tzinfo/tzinfo/blob/master/CHANGES.md">https://github.com/tzinfo/tzinfo/blob/master/CHANGES.md</a> <a href="https://rubydoc.info/gems/tzinfo/2.0.6">https://rubydoc.info/gems/tzinfo/2.0.6</a> <a href="https://tzinfo.github.io">https://tzinfo.github.io</a>
tzinfo-data	1.2023.3	MIT	<a href="https://tzinfo.github.io">https://tzinfo.github.io</a>
unf	0.1.4	2-clause BSD	<a href="https://github.com/knu/ruby-unf">https://github.com/knu/ruby-unf</a>
unf_ext	0.0.8.2	MIT	<a href="https://github.com/knu/ruby-unf_ext">https://github.com/knu/ruby-unf_ext</a>
uuid	2.3.9	MIT	<a href="http://github.com/assaf/uuid">http://github.com/assaf/uuid</a>
warden	1.2.9	MIT	<a href="https://github.com/hassox/warden">https://github.com/hassox/warden</a>
webrick	1.8.2	Ruby, BSD-2- Clause	<a href="https://github.com/ruby/webrick">https://github.com/ruby/webrick</a>
websocket-driver	0.7.5	Apache-2.0	<a href="https://github.com/faye/websocket-driver-ruby">https://github.com/faye/websocket-driver-ruby</a>
websocket-extensions	0.1.5	Apache-2.0	<a href="https://github.com/faye/websocket-extensions-ruby">https://github.com/faye/websocket-extensions-ruby</a>
workflow	2.0.2	MIT	<a href="https://github.com/geekq/workflow">https://github.com/geekq/workflow</a>
xxhash	0.4.0	MIT	<a href="http://github.com/nashby/xxhash">http://github.com/nashby/xxhash</a>
yajl-ruby	1.4.3	MIT	<a href="https://github.com/brianmario/yajl-ruby">https://github.com/brianmario/yajl-ruby</a>
zeitwerk	2.5.4	MIT	<a href="https://github.com/fxn/zeitwerk">https://github.com/fxn/zeitwerk</a> <a href="https://github.com/fxn/zeitwerk/blob/master/CHANGELOG.md">https://github.com/fxn/zeitwerk/blob/master/CHANGELOG.md</a>

#### STANDARD GEMS

abbrev	0.1.2	Ruby, BSD-2- Clause	<a href="https://github.com/ruby/abbrev">https://github.com/ruby/abbrev</a>
base64	0.2.0	Ruby, BSD-2- Clause	<a href="https://github.com/ruby/base64">https://github.com/ruby/base64</a>
benchmark	0.3.0	Ruby, BSD-2- Clause	<a href="https://github.com/ruby/benchmark">https://github.com/ruby/benchmark</a>
bigdecimal	3.1.5	Ruby, BSD-2- Clause	<a href="https://github.com/ruby/bigdecimal">https://github.com/ruby/bigdecimal</a>
bundler	2.5.22	MIT	<a href="https://github.com/rubygems/rubygems/tree/master/bundler">https://github.com/rubygems/rubygems/tree/master/bundler</a> <a href="https://github.com/rubygems/rubygems/blob/master/bundler/CHANGELOG.md">https://github.com/rubygems/rubygems/blob/master/bundler/CHANGELOG.md</a> <a href="https://bundler.io/">https://bundler.io/</a> <a href="https://bundler.io">https://bundler.io</a>
cgi	0.4.2	Ruby, BSD-2- Clause	<a href="https://github.com/ruby/cgi">https://github.com/ruby/cgi</a>
csv	3.2.8	Ruby, BSD-2- Clause	<a href="https://github.com/ruby/csv">https://github.com/ruby/csv</a>
date	3.3.4	Ruby, BSD-2- Clause	<a href="https://github.com/ruby/date">https://github.com/ruby/date</a>
delegate	0.3.1	Ruby, BSD-2- Clause	<a href="https://github.com/ruby/delegate">https://github.com/ruby/delegate</a>
did_you_mean	1.6.3	MIT	<a href="https://github.com/ruby/did_you_mean">https://github.com/ruby/did_you_mean</a>
digest	3.1.1	Ruby, BSD-2- Clause	<a href="https://github.com/ruby/digest">https://github.com/ruby/digest</a>
drb	2.2.0	Ruby, BSD-2- Clause	<a href="https://github.com/ruby/drb">https://github.com/ruby/drb</a>
english	0.8.0	Ruby, BSD-2- Clause	<a href="https://github.com/ruby/English">https://github.com/ruby/English</a>
erb	4.0.3	Ruby, BSD-2- Clause	<a href="https://github.com/ruby/erb">https://github.com/ruby/erb</a>
error_highlight	0.6.0	MIT	<a href="https://github.com/ruby/error_highlight">https://github.com/ruby/error_highlight</a>
etc	1.4.3	Ruby, BSD-2- Clause	<a href="https://github.com/ruby/etc">https://github.com/ruby/etc</a>

fcntl	1.1.0	Ruby, BSD-2- Clause	<a href="https://github.com/ruby/fcntl">https://github.com/ruby/fcntl</a>
fileutils	1.7.2	Ruby, BSD-2- Clause	<a href="https://github.com/ruby/fileutils">https://github.com/ruby/fileutils</a>
find	0.2.0	Ruby, BSD-2- Clause	<a href="https://github.com/ruby/find">https://github.com/ruby/find</a>
forwardable	1.3.3	Ruby, BSD-2- Clause	<a href="https://github.com/ruby/forwardable">https://github.com/ruby/forwardable</a>
getoptlong	0.2.1	Ruby, BSD-2- Clause	<a href="https://github.com/ruby/getoptlong">https://github.com/ruby/getoptlong</a>
io-console	0.7.1	Ruby, BSD-2- Clause	<a href="https://github.com/ruby/io-console">https://github.com/ruby/io-console</a>
io-nonblock	0.3.0	Ruby, BSD-2- Clause	<a href="https://github.com/ruby/io-nonblock">https://github.com/ruby/io-nonblock</a>
io-wait	0.3.1	Ruby, BSD-2- Clause	<a href="https://github.com/ruby/io-wait">https://github.com/ruby/io-wait</a>
ipaddr	1.2.6	Ruby, BSD-2- Clause	<a href="https://github.com/ruby/ipaddr">https://github.com/ruby/ipaddr</a>
irb	1.13.1	Ruby, BSD-2- Clause	<a href="https://github.com/ruby/irb">https://github.com/ruby/irb</a> <a href="https://github.com/ruby/irb/releases">https://github.com/ruby/irb/releases</a>
json	2.7.2	Ruby	<a href="https://github.com/flori/json">https://github.com/flori/json</a> <a href="https://github.com/flori/json/blob/master/CHANGES.md">https://github.com/flori/json/blob/master/CHANGES.md</a> <a href="https://flori.github.io/json/doc/index.html">https://flori.github.io/json/doc/index.html</a> <a href="https://flori.github.io/json">https://flori.github.io/json</a>
logger	1.6.0	Ruby, BSD-2- Clause	<a href="https://github.com/ruby/logger">https://github.com/ruby/logger</a>
mutex_m	0.2.0	Ruby, BSD-2- Clause	<a href="https://github.com/ruby/mutex_m">https://github.com/ruby/mutex_m</a>
net-http	0.4.1	Ruby, BSD-2- Clause	<a href="https://github.com/ruby/net-http">https://github.com/ruby/net-http</a>
net-protocol	0.2.2	Ruby, BSD-2- Clause	<a href="https://github.com/ruby/net-protocol">https://github.com/ruby/net-protocol</a>
nkf	0.1.3	Ruby, BSD-2- Clause	<a href="https://github.com/ruby/nkf">https://github.com/ruby/nkf</a>
observer	0.1.2	Ruby, BSD-2- Clause	<a href="https://github.com/ruby/observer">https://github.com/ruby/observer</a>
open-uri	0.4.1	Ruby, BSD-2- Clause	<a href="https://github.com/ruby/open-uri">https://github.com/ruby/open-uri</a>
open3	0.2.1	Ruby, BSD-2- Clause	<a href="https://github.com/ruby/open3">https://github.com/ruby/open3</a>
openssl	3.2.0	Ruby	<a href="https://github.com/ruby/openssl">https://github.com/ruby/openssl</a>
optparse	0.4.0	Ruby, BSD-2- Clause	<a href="https://github.com/ruby/optparse">https://github.com/ruby/optparse</a>
ostruct	0.6.0	Ruby, BSD-2- Clause	<a href="https://github.com/ruby/ostruct">https://github.com/ruby/ostruct</a>
pathname	0.3.0	Ruby, BSD-2- Clause	<a href="https://github.com/ruby/pathname">https://github.com/ruby/pathname</a>
pp	0.5.0	Ruby, BSD-2- Clause	<a href="https://github.com/ruby/pp">https://github.com/ruby/pp</a>
prettyprint	0.2.0	Ruby, BSD-2- Clause	<a href="https://github.com/ruby/prettyprint">https://github.com/ruby/prettyprint</a>
prism	0.19.0	MIT	<a href="https://github.com/ruby/prism">https://github.com/ruby/prism</a> <a href="https://github.com/ruby/prism/blob/main/CHANGELOG.md">https://github.com/ruby/prism/blob/main/CHANGELOG.md</a>
pstore	0.1.3	Ruby, BSD-2- Clause	<a href="https://github.com/ruby/pstore">https://github.com/ruby/pstore</a>
psych	5.1.2	MIT	<a href="https://github.com/ruby/psych">https://github.com/ruby/psych</a>
rdoc	6.6.3.1	Ruby	<a href="https://github.com/ruby/rdoc">https://github.com/ruby/rdoc</a> <a href="https://github.com/ruby/rdoc/releases">https://github.com/ruby/rdoc/releases</a> <a href="https://ruby.github.io/rdoc">https://ruby.github.io/rdoc</a>
readline	0.0.4	Ruby	<a href="https://github.com/ruby/readline">https://github.com/ruby/readline</a>
reline	0.5.10	Ruby	<a href="https://github.com/ruby/reline">https://github.com/ruby/reline</a> <a href="https://github.com/ruby/reline/releases">https://github.com/ruby/reline/releases</a>

resolv	0.3.1	Ruby, BSD-2- Clause	<a href="https://github.com/ruby/resolv">https://github.com/ruby/resolv</a>
resolv-replace	0.1.1	Ruby, BSD-2- Clause	<a href="https://github.com/ruby/resolv-replace">https://github.com/ruby/resolv-replace</a>
rinda	0.2.0	Ruby, BSD-2- Clause	<a href="https://github.com/ruby/rinda">https://github.com/ruby/rinda</a>
ruby2_keywords	0.0.5	Ruby, BSD-2- Clause	<a href="https://github.com/ruby/ruby2_keywords">https://github.com/ruby/ruby2_keywords</a>
securerandom	0.3.1	Ruby, BSD-2- Clause	<a href="https://github.com/ruby/securerandom">https://github.com/ruby/securerandom</a>
set	1.1.0	Ruby, BSD-2- Clause	<a href="https://github.com/ruby/set">https://github.com/ruby/set</a> <a href="https://github.com/ruby/set/blob/v1.1.0/CHANGELOG.md">https://github.com/ruby/set/blob/v1.1.0/CHANGELOG.md</a>
shellwords	0.2.0	Ruby, BSD-2- Clause	<a href="https://github.com/ruby/shellwords">https://github.com/ruby/shellwords</a>
singleton	0.2.0	Ruby, BSD-2- Clause	<a href="https://github.com/ruby/singleton">https://github.com/ruby/singleton</a>
stringio	3.1.1	Ruby, BSD-2- Clause	<a href="https://github.com/ruby/stringio">https://github.com/ruby/stringio</a>
strscan	3.0.9	Ruby, BSD-2- Clause	<a href="https://github.com/ruby/strscan">https://github.com/ruby/strscan</a>
syntax_suggest	2.0.1	MIT	<a href="https://github.com/ruby/syntax_suggest.git">https://github.com/ruby/syntax_suggest.git</a>
syslog	0.1.2	Ruby, BSD-2- Clause	<a href="https://github.com/ruby/syslog">https://github.com/ruby/syslog</a>
tempfile	0.2.1	Ruby, BSD-2- Clause	<a href="https://github.com/ruby/tempfile">https://github.com/ruby/tempfile</a>
time	0.3.0	Ruby, BSD-2- Clause	<a href="https://github.com/ruby/time">https://github.com/ruby/time</a>
timeout	0.4.1	Ruby, BSD-2- Clause	<a href="https://github.com/ruby/timeout">https://github.com/ruby/timeout</a>
tmpdir	0.2.0	Ruby, BSD-2- Clause	<a href="https://github.com/ruby/tmpdir">https://github.com/ruby/tmpdir</a>
tsort	0.2.0	Ruby, BSD-2- Clause	<a href="https://github.com/ruby/tsort">https://github.com/ruby/tsort</a>
un	0.3.0	Ruby, BSD-2- Clause	<a href="https://github.com/ruby/un">https://github.com/ruby/un</a>
uri	0.13.2	Ruby, BSD-2- Clause	<a href="https://github.com/ruby/uri">https://github.com/ruby/uri</a> <a href="https://github.com/ruby/uri/releases">https://github.com/ruby/uri/releases</a> <a href="https://ruby.github.io/uri/">https://ruby.github.io/uri/</a>
weakref	0.1.3	Ruby, BSD-2- Clause	<a href="https://github.com/ruby/weakref">https://github.com/ruby/weakref</a>
yaml	0.3.0	Ruby, BSD-2- Clause	<a href="https://github.com/ruby/yaml">https://github.com/ruby/yaml</a>
zlib	3.1.1	Ruby, BSD-2- Clause	<a href="https://github.com/ruby/zlib">https://github.com/ruby/zlib</a>