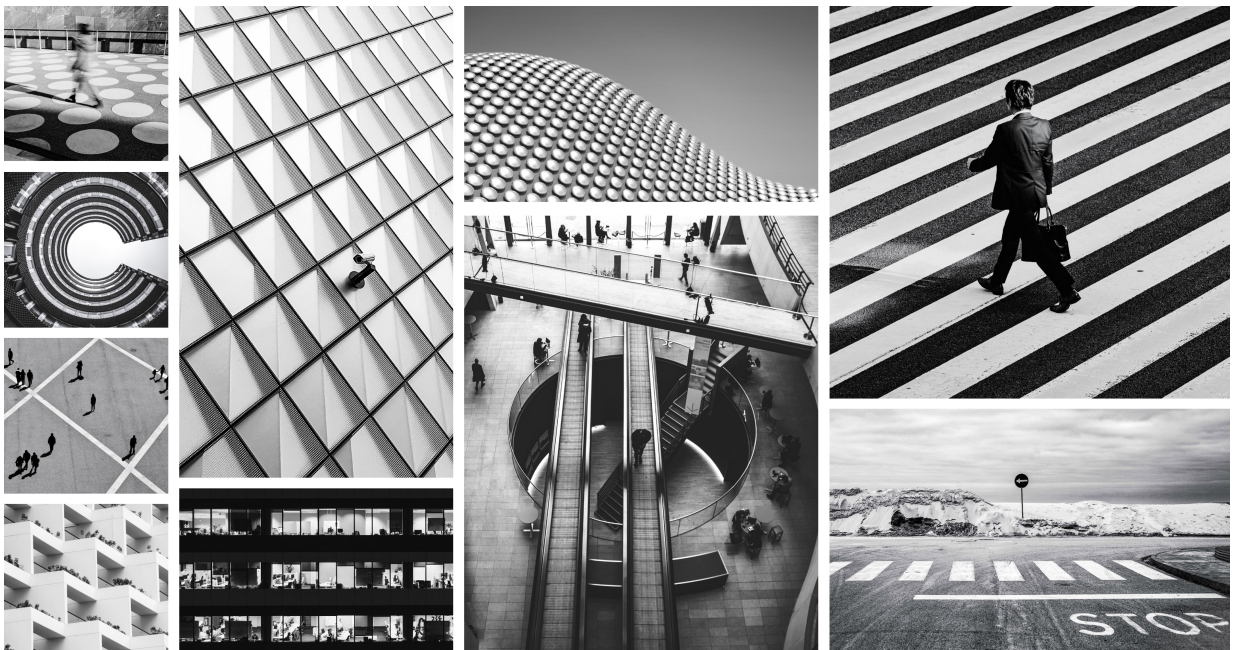




TECHNICAL
DOCUMENTATION

Illumio Core What's New and Release Notes 24.5

Published: January 2025



Learn about new features and review the resolved and known issues for Illumio Core and other components.

Table of Contents

What's New in 24.5	6
What's New and Changed in This Release	6
What's New and Changed in Release 24.5.0	6
New and Changed APIs in Release 24.5	6
New REST APIs in Release 24.5	6
Changed APIs in Release 24.5	9
Illumio Core Release Notes 24.5	13
Product Version	13
Resolved Issues in Release 24.5.0	14
Illumio LW-VEN Release 1.1	15
What's New in LW-VEN Release 1.1.0	15
Support for flow reporting for legacy Windows servers	15
Resolved Issues in 1.1.10 LW-VEN	15
Resolved Issues in 1.1.0 LW-VEN	16
Illumio Core for Kubernetes Release Notes	17
Illumio Core for Kubernetes Release Notes 5.2	17
About Illumio Core for Kubernetes 5.2	17
Updates for Core for Kubernetes 5.2.3	17
Updates for Core for Kubernetes 5.2.2	18
What's New in Release 5.2.1	18
Updates for Core for Kubernetes 5.2.1	18
What's New in Release 5.2.0	19
Updates for Core for Kubernetes 5.2.0	24
Illumio Core for Kubernetes Release Notes 5.1	24
Core for Kubernetes 5.1.10	25
Limitations	25
Updates for Core for Kubernetes 5.1.10	26
Updates for Core for Kubernetes 5.1.7	26
Updates for Core for Kubernetes 5.1.3	26
Updates for Core for Kubernetes 5.1.2	27
Updates for Core for Kubernetes 5.1.0	28
Security Information for Core for Kubernetes 5.1	29
Illumio Core for Kubernetes Release Notes 5.0.0	30
About Illumio Core for Kubernetes 5.0	30
Product Version	30
What's New in C-VEN and Kubelink	30
NodePort Limitations	31
Updates for Core for Kubernetes 5.0.0-LA	31
Illumio Core for Kubernetes Release Notes 4.3.0	33
What's New in Kubernetes 4.3.0	33
Product Version	33
Updates for Core for Kubernetes 4.3.0	34
Illumio Flowlink Release Notes for Release 1.4.0	35
Product Version	35
New Features in Illumio Flowlink 1.4.0	35
Resolved and Known Issues in FlowLink 1.4.0	35
Resolved Issue	35
Known Issue	36
Illumio Flowlink Release Notes 1.3.0	37
Product Version	37
New Feature in Flowlink 1.3.0	37
Resolved Issue in Flowlink 1.3.0	38
Illumio NEN Release Notes 2.6	39

Product Version	39
Release Types and Numbering	39
Resolved Issues in NEN 2.6.30	39
Known Issues in NEN 2.6.30	39
Resolved Issue in NEN 2.6.20	40
Known Issues in NEN 2.6.20	40
Resolved Issues in NEN 2.6.10	40
Known Issues in NEN 2.6.10	40
2.6.10 Security Information	40
Resolved Issues in NEN 2.6.1	40
Known Issues in NEN 2.6.1	41
Resolved Issues in NEN 2.6.0	41
Known Issues in NEN 2.6.0	42
Illumio NEN Release Notes 2.5	43
Product Version	43
Resolved Issue in NEN 2.5.2.A1	43
Known Issues in NEN 2.5.2.A1	43
Resolved Issues in NEN 2.5.2	44
Known Issues in NEN 2.5.2	44
Resolved Issue in NEN 2.5.1	44
Known Issues in NEN 2.5.1	44
Resolved Issues in NEN 2.5.0	44
Known Issues in NEN 2.5.0	45
Illumio NEN Release Notes 2.4	46
Product Version	46
Resolved Issue in NEN 2.4.10	46
Known Issues in NEN 2.4.10	46
Resolved Issues in NEN 2.4.0	46
Known Issues in NEN 2.4.0	47
Limitation in NEN 2.4.0	47
New Document Locations	48
Core	49
Cloud	52
Other Products: Edge, Xpress, MSP	52
Integrations	53
PDF Library	55
Security Advisories	61
September 2024 Security Advisories	61
Ruby SAML gem component authentication bypass vulnerability	61
Severity	61
Affected Products and Patch Information	61
Resolution	61
References	62
Skipped Critical Patch Updates	62
Discovered By	62
Frequently Asked Questions	62
Modification History	63
September 2023 Security Advisories	63
Authenticated RCE due to unsafe JSON deserialization	63
Severity	63
Affected Products and Patch Information	63
Resolution	64
References	64
Skipped Critical Patch Updates	64
Discovered By	64

Frequently Asked Questions	64
Legal Notice	66

What's New in 24.5

Learn about new features released in this version.

What's New and Changed in This Release

Before upgrading to Illumio Core 24.5, familiarize yourself with the following new and modified features in this release.

The information in this section describes the new and modified features to the PCE, REST API, and PCE web console.

What's New and Changed in Release 24.5.0

- **Alert when certificate is nearing expiration**

On-prem PCE users are now alerted when a certificate on a PCE node is nearing expiration. A message is logged to syslog and displayed in the PCE health page.

- **Enforced NAT Mode 1:1. Create Public Interface even if Workload's Datacenter or Service Provider are Unknown**

Workloads now have a new optional feature "Enforced NAT mode 1:1" which is disabled by default. If enabled, NAT mode 1:1 ensures that pseudo-public IP addresses are detected and are then saved as workload interfaces even when the VEN (or C-VEN) cannot identify the datacenter or service provider. If this option remains disabled, the PCE either relies on the VEN to report the public IP address or derives it based on a datacenter match. When this option is enabled on a Container Cluster, the feature applies to all host workloads on all of its cluster nodes.

New and Changed APIs in Release 24.5

This document lists the new and changed REST APIs in release 24.5.

New REST APIs in Release 24.5

The new APIs are:

- `traffic_flows_cloud_resource.schema.json`

```
{
  "$schema": "http://json-schema.org/draft-04/schema#",
  "description": "Cloud Resource details of the traffic-flow endpoint",
  "type": "object",
  "additionalProperties": false,
  "required": [
    "resource_uuid",
    "labels",
    "type"
  ]
}
```

```

    ],
    "properties": {
      "resource_uuid": {
        "description": "The UUID of the resource",
        "type": "string"
      },
      "labels": {
        "$ref": "traffic_flows_endpoint_labels.schema.json"
      },
      "type": {
        "type": "string",
        "enum": [
          "aws",
          "azure",
          "ocp",
          "gcp",
          "unknown"
        ]
      }
    }
  }
}

```

- traffic_flows_cloud_resource_param.schema.json


```

{
  "$schema": "http://json-schema.org/draft-04/schema#",
  "description": "Cloud resource Id parameter for a traffic query",
  "type": "object",
  "additional_properties": "false",
  "required": [
    "cloud_resource"
  ],
  "properties": {
    "cloud_resource": {
      "type": "object",
      "additional_properties": "false",
      "required": [
        "resource_uuid"
      ],
      "properties": {
        "resource_uuid": {
          "description": "UUID of cloud resource",
          "type": "string"
        }
      }
    }
  }
}

```
- traffic_flows_data_center_type_param.schema.json


```

{
  "$schema": "http://json-schema.org/draft-04/schema#",
  "description": "Data-center parameter for a traffic query",
  "type": "object",
  "additional_properties": "false",
  "required": [
    "data_center"
  ]
}

```

```

],
"properties": {
  "data_center": {
    "type": "object",
    "additional_properties": "false",
    "required": [
      "type"
    ],
    "properties": {
      "type": {
        "description": "Type of the datacenter, such as core/cloud/aws/
azure/gcp",
        "type": "string",
        "enum": [
          "core",
          "cloud",
          "aws",
          "azure",
          "gcp"
        ],
        "default": "core"
      }
    }
  }
}
}
}

```

- common kubernetes_service.schema.json

```

{
  "$schema": "http://json-schema.org/draft-04/schema#",
  "type": "object",
  "additionalProperties": false,
  "required": [
    "service_ports",
    "service_type"
  ],
  "properties": {
    "service_ports": {
      "description": "Array of (backend) ports for the service
(target_port in k8s service configuration)",
      "type": "array",
      "additionalProperties": false,
      "minItems": 1,
      "items": {
        "type": "object",
        "required": ["protocol", "port"],
        "properties": {
          "port": {
            "description": "Port Number (integer 0-65535 or -1 for any
port).",
            "type": "integer"
          },
          "protocol": {
            "$ref": "../common/
service_ports_protocol_numeric.schema.json",
            "enum": [6, 17]
          }
        }
      }
    }
  }
}

```

```

    },
    "node_port": {
      "description": "Port Number (integer 0-65535) of the node
port.",
      "type": "integer"
    }
  },
  },
  },
  },
  "external_traffic_policy": {
    "description": "External traffic policy configured for this
service. This determines whether traffic is forwarding between nodes to
find a backing pod.",
    "type": ["string", "null"],
    "enum": ["cluster", "local"]
  },
  "service_type": {
    "description": "Kubernetes ServiceType",
    "type": ["string"],
    "enum": ["ClusterIP", "NodePort", "LoadBalancer", "ExternalName"]
  },
  "consumer_ports": {
    "description": "Array of (client) ports (1-65535) for the service
(port in k8s service configuration)",
    "type": "array",
    "items": {
      "type": "integer"
    }
  },
  },
  "ip_addresses": {
    "description": "Array of IPs or CIDRs for the service",
    "type": "array",
    "items": {
      "type": "string",
      "$ref": "../common/ip_address_format_validation.schema.json"
    }
  }
}
}
}

```

Changed APIs in Release 24.5

The following APIs have been changed in release 24.5:

Traffic Flows APIs

- traffic_flows_destination_exclude_array
- traffic_flows_destination_include_array_list
- traffic_flows_endpoint
- traffic_flows_exclude_array
- traffic_flows_include_array_list

```

" + ",
{

```

```

        "$ref": "traffic_flows_cloud_resource_param.schema.json"
      }
    ],
    [
      "+",
      {
        "$ref": "traffic_flows_data_center_type_param.schema.json"
      }
    ]
  ]
]

```

These four schemas have added references to these traffic flow schemas:

traffic_flows_cloud_resource_param

```

{
  "$schema": "http://json-schema.org/draft-04/schema#",
  "description": "Cloud resource Id parameter for a traffic query",
  "type": "object",
  "additional_properties": "false",
  "required": [
    "cloud_resource"
  ],
  "properties": {
    "cloud_resource": {
      "type": "object",
      "additional_properties": "false",
      "required": [
        "resource_uuid"
      ],
      "properties": {
        "resource_uuid": {
          "description": "UUID of cloud resource",
          "type": "string"
        }
      }
    }
  }
}

```

traffic_flows_data_center_type_param

```

{
  "$schema": "http://json-schema.org/draft-04/schema#",
  "description": "Data-center parameter for a traffic query",
  "type": "object",
  "additional_properties": "false",
  "required": [
    "data_center"
  ],
  "properties": {
    "data_center": {
      "type": "object",
      "additional_properties": "false",
      "required": [
        "type"
      ],
    },
  },
}

```

```

        "properties": {
          "type": {
            "description": "Type of the datacenter, such as core/cloud/aws/azure/gcp",
            "type": "string",
            "enum": [
              "core",
              "cloud",
              "aws",
              "azure",
              "gcp"
            ],
            "default": "core"
          }
        }
      }
    }
  }
}

```

- traffic_flows_endpoint


```

      {
        "properties": {
          "data_center__added": {
            "$ref": "traffic_flows_data_center_type_param.schema.json"
          },
          "cloud_resource": {
            "ref_deleted": "traffic_flows_cloud_resource.schema.json",
            "$ref__added": "traffic_flows_cloud_resource.schema.json"
          }
        }
      }
    }
  }

```

Workloads APIs

workloads_with_ven_interfaces_put;

workloads_get;

workloads_with_ven_put.

All three schemas have the same property added: datacenter_nat_1tol.

```

{
  "properties": {
    "datacenter_nat_1tol__added": {
      "description": "Datacenter NAT 1tol mode ON. Used for enforcing creation of pseudo public interface",
      "type": "boolean"
    }
  }
}

```

Other API Changes

sec_policy_rule_search_post

This schema has one new property `resolve_actors`, which can be **true** or **false**.

The new property was added to facilitate the deep rule search.

```
{
  "properties": {
    "resolve_actors__added": {
      "description": "Resolve actors to do a deep Rule search",
      "type": "boolean"
    }
  }
}
```

`kubernetes_workloads_get`

This schema has a new property `container_cluster_service`, referencing the schema `sec_policy_virtual_services_get`.

```
{
  "properties": {
    "container_cluster_service__added": {
      "$ref": "sec_policy_virtual_services_get.schema.json"
    }
  }
}
```

Illumio Core Release Notes 24.5

These release notes describe resolved issues in this release.

Published: January 2025

Product Version

PCE Version: 24.5.0 (Illumio On-Premises customers)

These release notes provide a list of resolved issues for Illumio Core 24.5.

Illumio Core release numbering uses the following format: "a.b.c-d+e".

- "a.b": Standard or LTS release number, for example, "2.2"
- ".c": Maintenance release number, for example, ".1"
- "-d": Optional descriptor for pre-release versions, for example, "preview2"

Resolved Issues in Release 24.5.0

Issue	Description
E-121874	<p>Core Services Data Creation Issue</p> <p>The Core Services page incorrectly displayed no data. The page displayed the following messages: "Core service detection algorithm has not run yet. Scanner detection algorithm has not run yet."</p>
E-121846	<p>Blank screen appeared when attempting to edit a NEN-managed switch through the PCE</p> <p>In an environment with NENs managing switch traffic and with more than 500 existing workloads, clicking Edit in the PCE UI to edit a switch or add an interface to an already-managed switch resulted in a blank screen. This issue is resolved</p>
E-121733	<p>Server VEN labels and workload names were not visible following upgrade to PCE 24.4.0</p> <p>After upgrading to PCE release 24.4.0, labels and workload names were intermittently absent from the UI, which interfered with customer's ability to create and update rulesets.</p>
E-121567	<p>Traffic results blank when using a large IP list as an exclusion filter</p> <p>When on a supercluster leader, running a traffic query that uses a large IP list as a filter failed to produce any search results, and generated an "Incomplete Results" error message from several PCE members.</p>
E-120928	<p>In Draft View, "allowed" or "blocked" status for traffic was incorrect in some cases</p> <p>When evaluating the potential effect of rules in Draft View, the depiction of traffic as allowed or blocked was inaccurate for Override Deny rules that specified "Any IP" object as the Source.</p>
E-120904	<p>Existing macOS workloads not found by Labeling Rule</p> <p>A Label Rule designed to apply a label to macOS workloads failed because it didn't identify existing macOS workloads in the customer's network.</p>
E-120467	<p>Supercluster replication issues after upgrade to 23.5.x PCE</p> <p>In rare cases when VENs were previously moved among PCEs in a Supercluster, replication failed after upgrading the PCE to 23.5.x.</p>
E-120243	<p>Container cluster service provisioning failures</p> <p>This release addresses transient container cluster service provisioning issues when the PCE is under high load.</p>
E-119688	<p>PCE setup does not work on RHEL 9.x in FIPS mode</p> <p>This release resolves an incompatibility with the PCE and RHEL 9.x in FIPS mode which caused the PCE to not start properly.</p>
E-118183	<p>Navigation error while navigating to Authentication Settings > SAML: Not Found</p> <p>In PCEs running 22.5.32, sometimes going to Authentication Settings > SAML resulted in the attempted navigation being cancelled, and a "Navigation error details" popup appearing.</p>

Illumio LW-VEN Release 1.1

What's New in LW-VEN Release 1.1.0

The following new feature is added in this release:

Support for flow reporting for legacy Windows servers

Beginning with release 1.1.0, the LW-VEN can enable the native Windows Firewall log on your legacy Windows server, which allows the LW-VEN to generate and log traffic flow information for ingestion by the PCE. After ingesting the log information, the PCE displays it in its Map and Traffic views to help you gain insights about and create policy for your business applications. See [Enable Flow Reporting](#).

Resolved Issues in 1.1.10 LW-VEN

Issue	Description	Status
E-120840	ICMP rule generation created empty command When the LW-VEN generated a rule to add/modify/delete an ICMP rule, it also generated an empty command which caused the LW-VEN to fail when it tried to apply policy to that empty command.	Resolved
E-120184	Excessive time needed for Windows firewall to apply Illumio rules Policy application failed when the Windows firewall took longer than expected to apply PCE-generated rules. This issue is fixed. Policy is now applied in the background. Note that applying firewall commands on a low-powered server can take longer than expected.	Resolved
E-120119	Policy conflict lead to policy sync failure and LW-VEN crash A conflict occurred when merging the default Illumio policy with the customer's Illumio-generated policy. This caused an Illumio policy sync failure and crashed the LW-VEN service.	Resolved

Resolved Issues in 1.1.0 LW-VEN

Issue	Description	Status
E-119190	<p>LW-VEN activation failed on non-UTF-8 legacy Windows workloads</p> <p>LW-VEN activation failed on workloads configured for non-US languages. This happened because LW-VEN version 1.0.1 doesn't support non-UTF-8 strings. This issue is fixed. Support for non-UTF-8 was added in LW-VEN 1.1.0.</p>	Resolved
E-118952	<p>Activate option appeared during "non-fresh" LW-VEN installation</p> <p>When installing an LW-VEN on a supported legacy Windows machine on which an LW-VEN is already activated, the option Start + Activate appeared, which was unexpected. As this wasn't a fresh installation, only the Start option should've appeared, not Start+Activate. This issue is resolved. Now, only Start appears during non-fresh installations.</p>	Resolved
(E-118764	<p>Users weren't prompted during LW-VEN activation if activation command was run without options</p> <p>Attempting to activate LW-VEN failed if users issued the illumio-lwven-ctl activate command without options. A command prompt appeared but no prompts displayed and the activation hung. This issue is fixed.</p>	Resolved
E-118600	<p>LW-VEN 1.0.1 failed to apply 2008 firewall policy that contained very large port range</p> <p>The Windows Firewall rejected Illumio security policy rules that specified extremely large port ranges, resulting in policy not being applied. This issue is resolved. Rules exceeding 1000 ports are now split into multiple rules, and rules with large port ranges are no longer rejected. Caveat: Customers should keep in mind that applying a policy with a large port range may cause the Windows firewall to become unresponsive and take a long time to respond to any firewall command.</p>	Resolved

Illumio Core for Kubernetes Release Notes

This section provides release notes for the following versions of Kubernetes:

- 5.2.x
- 5.1.x
- 5.0.x
- 4.3.x

Illumio Core for Kubernetes Release Notes 5.2

January 2025

About Illumio Core for Kubernetes 5.2

These release notes describe the resolved issues, known issues, and related information for the 5.2.x releases of Illumio Core for Kubernetes, formerly known as Illumio Containerized VEN, or C-VEN. Illumio Core for Kubernetes also includes the related required component, Kubelink. Because of this heritage, many references to this product as "C-VEN" are still used throughout the documentation.

Document Last Revised: January 2025

Product Version

Compatible PCE Versions: 23.5.10 and later releases

Current Illumio Core for Kubernetes Version: 5.2.3, which includes:

- C-VEN version: 23.4.2
- Kubelink version: 5.2.1
- Helm Chart version: 5.2.3

Updates for Core for Kubernetes 5.2.3

Kubelink

Resolved Issue

- **One service appears multiple times in service update** (E-122306)

Kubelink was sending one service multiple times in an update request to PCE, which caused multiple duplicates of Service Backends, and slowed PCE responsiveness. Older Kubelink 3.1.x and 4.x also have this issue and should be upgraded to Kubelink 5.2.1, either using Helm chart 5.2.3, or by using yaml files generated from this Helm chart version.

Kubelink 5.2.1 in non-CLAS mode is backward compatible with all currently supported PCE versions.

Updates for Core for Kubernetes 5.2.2

C-VEN

Resolved Issues

- **Multiple C-VEs not syncing policy** (E-122102)
In larger CLAS-enabled clusters with very big policies, even though C-VEs initially appeared to be properly synced, the policy was not updated.
- **C-VEN on PCE UI has "-dev" in version but image pulled from helm does not** (E-120423)
After upgrading to release 5.2.0, the C-VEN version was reported with a "-dev" string appended (for example, "23.4.0-8-dev") in the PCE UI (at the VEN details page) and other locations like in `/etc/agent_version`, but the image specified in the C-VEN daemonset resource did not.
- **C-VEN: unable to send flows if there is a lot of data** (E-119110)
When C-VEN attempted to send a large amount of flow data at once, the transmission would fail, and after a few retries the AgentMgr process would crash, causing C-VEN to stop sending flow records.

What's New in Release 5.2.1

- **Helm Chart option to Disable NodePort Forwarding**
A new option was added to Helm Chart for C-VEN that disables NodePort forwarding on host workloads. After setting `enforceNodePortTraffic: never` in the Helm values file, C-VEN behaves like before in its 22.5 version-- that is, the forward chain on Node is open, and custom iptables rules must be used to enforce traffic in this chain.

Updates for Core for Kubernetes 5.2.1

Kubelink

Resolved Issues

- **Kubelink can't start on OpenShift because of fsGroup 1001** (E-120425)
When using Helm Chart 5.2.0 on OpenShift, Kubelink would not start because of fsGroup 1001.

C-VEN

Resolved Issues

In an early version of these Release Notes issues E-119682 and E-119110 were incorrectly listed as being resolved.

- **NodePort access is working when it should be blocked** (E-120655)

NodePort traffic was being always allowed, with or without a rule allowing the traffic from an external resource to the NodePort service. This issue was fixed by adding missing legacy iptables command line utilities to the UBI9-based C-VEN.

- **Move C-VEN base image to a smaller image** (E-118492)

C-VEN now uses a UBI9-micro image as its base image, using the current latest version 9.4-15.

What's New in Release 5.2.0

- **"Wait for Policy" Feature**

With a new Wait For Policy feature, CLAS-enabled Kubelink can be configured to automatically and transparently delay the start of an application container in a pod until a policy is properly applied to the pod. This feature replaces the local policy convergence controller, the Illumio readiness gate. A readiness gate required adding the `readinessGates.conditionType` into the spec YAML file of the Kubernetes Workload. Instead, Wait For Policy uses an automatically injected init container, with no change of the user application needed. When enabled, Wait For Policy synchronizes the benefit of Kubernetes automatic container creation with the protection of proper policy convergence into the new container. For more information, see ["Wait For Policy" Feature \[22\]](#).

- **CLAS Flat Network Support**

Starting in version 5.2.0, the Kubelink Operator supports flat network CNIs in CLAS mode, a feature that was previously only available in non-CLAS mode. This update includes compatibility with flat network types such as [Azure CNI Pod Subnet](#) and [Amazon VPC CNI](#). To enable a flat network CNI, set the `networkType` parameter to `flat` in the Helm Chart's `illumio-values.yaml` file during installation.

Also note that in CLAS-enabled flat networks, if a pod communicates with a virtual machine outside the cluster using private IP addresses, you must enable the annotation `meta.illumio.podIPObservability`. This is a scenario in which the virtual machine is in a private network and has an IP address from the same range as cluster nodes and pods. In this case, the PCE needs to know the private IP address of the pod to be able to open a connection on the virtual machine. The main benefit of CLAS is that the PCE no longer directly manages individual pods, so the implementation expects a specific annotation on such pods. Traffic between such private IPs will be blocked without this annotation, and will appear in the UI as blocked.

In this case, when the application communicates through private IPs, add the following annotation so that Kubelink can then report the private IPs of Kubernetes Workloads to the PCE:

```
metadata:
  annotations:
    meta.illumio.podIPObservability: "true"
```

- **Kubelink Support Bundle**

To assist the Illumio Support team with more details for troubleshooting, Kubelink now provides a support bundle that collects up to 2 GB of logs, metrics, and other data inside its pod. Future versions will add the option to upload these support bundles to the PCE. Currently, you must copy this support bundle by running the script `/support_bundle.sh` inside the Kubelink pod. The script generates debug data, creates a gzipped tar archive using `stdout` as output, and encodes this data using Base64.

Use the following command to generate and transfer the Kubelink support bundle from its pod: (Note that the backslash (`\`) character is included to indicate the continuation of a long command line that will be truncated by the right margin of this document in PDF form.)

```
kubectl --namespace illumio-system exec deploy/illumio-kubelink \
-- /support_bundle.sh | base64 --decode > /tmp/kubelink_support.tgz
```

Send the resulting compressed archive file to Illumio Support when requested.

- **Base OS Upgraded to UBI9**

The base OS has been upgraded to Red Hat Universal Base Image 9 (micro UBI9 for Kubelink, mini UBI9 for C-VEN).



IMPORTANT

Important Notice: With the base image upgrade for both Kubelink and C-VEN, you must adjust resource allocations according to the guidance described below in the "[Resource Allocation Guidelines \[20\]](#)" section. You must ensure that resources are updated prior to the upgrade to achieve optimal performance, and to avoid any potential degradation in product performance.

- **Enhanced Pod Stability for Kubelink and C-VEN**

To address the challenge of pod eviction during Kubernetes cluster issues or space shortages, Kubelink was previously the first pod to be evicted, which led to failures in policy enforcement. Recognizing the critical need for stability, Helm Chart version 5.2.0 introduces default priority classes for both Kubelink and C-VEN. Kubelink is now assigned the priority class of `system-cluster-critical`, while C-VEs receive `system-node-critical`. This implementation significantly enhances the resilience of your deployments, ensuring that key components remain operational even under resource constraints.

- **Changes to Supported Orchestration Platforms and Components in 5.2.0**

The 5.2.0 release contains several changes to supported platforms and components. For full details, see [Kubernetes Operator OS Support and Dependencies](#) on the Illumio Support portal (log in required).

Resource Allocation Guidelines

New resource allocation guidelines have been developed to help configure deployments to achieve optimal performance and cost-efficiency.

These guidelines are grouped into the following general deployment sizes:

- **Small-scale:** Customers with limited Kubernetes deployments and moderate workloads.
- **Medium-scale:** Customers with moderate-sized Kubernetes environments and growing workloads.
- **Large-scale:** Customers with extensive Kubernetes deployments and high-performance requirements.

The following variables determine the deployment sizes listed above:

- Number of nodes per cluster
- Total number of workloads per cluster
- Total policy size per cluster

Set the `resources` values in the appropriate pod spec (Kubelink or C-VEN) `yaml` file under the `storage` section, as shown in the following example:

```
storage:
  sizeGi: 1
```

```
resources:
  limits:
    memory: 600Mi
  requests:
    memory: 500Mi
    cpu: 500m
```

If you have two parameters that match one category, and a third parameter that matches another, it's important to select the category based on the highest value among them.

For instance, if the number of nodes per cluster is 8, and the total number of Kubernetes workloads is 500, but the average size of the policy is 1 Gi, the resource allocation should align with the large-scale resource allocation. This ensures that your resources are appropriately scaled to meet the demands of your workloads, optimizing performance and stability.

In practice, monitor these resources, and if usage is at 80% of these limits, then consider increasing.

NOTE that amounts are expressed in mebibytes (Mi) and gibibytes (Gi) and not in megabytes (MB) or gigabytes (GB).

Small-scale resource allocation

Customer Category	Nodes per Cluster	Total K8s Workloads	Total Policy Size	
Small-scale	1 - 10	0 - 1000	0 - 1.5 Mi	
Resources		C-VEN	Kubelink	Storage
Requests	CPU	0.5	0.5	0.5
Requests	memory	600 Mi	500 Mi	500 Mi
Limits	CPU	1	1	1
Limits	memory	700 Mi	600 Mi	600 Mi
Volumes	size limits	n/a	n/a	1 Gi

Medium-scale resource allocation

Customer Category	Nodes per Cluster	Total K8s Workloads	Total Policy Size	
Medium-scale	10 - 20	1000 - 5000	1.5 Mi - 500 Mi	
Resources		C-VEN	Kubelink	Storage
Requests	CPU	2	2	1
Requests	memory	3 Gi	5 Gi	5 Gi
Limits	CPU	3	2	2
Limits	memory	5 Gi	7 Gi	7 Gi
Volumes	size limits	n/a	n/a	5 Gi

Large-scale resource allocation

Customer Category	Nodes per Cluster	Total K8s Workloads	Total Policy Size	
Large-scale	20+	5000 - 8000	500 Mi - 1.5 Gi	
Resources		C-VEN	Kubelink	Storage
Requests	CPU	2	3	1
Requests	memory	6 Gi	10 Gi	10 Gi
Limits	CPU	3	4	2
Limits	memory	8 Gi	12 Gi	12 Gi
Volumes	size limits	n/a	n/a	10 Gi

"Wait For Policy" Feature

With a new *Wait For Policy* feature, CLAS-enabled Kubelink can be configured to automatically and transparently delay the start of an application container in a pod until a policy is properly applied to that container. This synchronizes the benefit of automatic container creation with the protection of proper policy convergence into the new container.

This Wait For Policy feature replaces the existing local policy convergence controller, also known as a readiness gate. A readiness gate required manually adding the `readinessGate` condition into the spec of the Kubernetes Workload. Instead, Wait For Policy uses an automatically injected init container, which requires no change to the user application.

Behavior

When Wait For Policy is enabled, Kubelink creates a new `MutatingWebhookConfiguration`. This webhook injects an Illumio init container into every new pod. Now a new pod lifecycle consists of the following sequence of actions:

1. Kubernetes creates a pod.
2. The pod creation request is intercepted by a mutating webhook.
3. Kubernetes requests MutatingAdmissionWebhook Controller running in Kubelink.
4. Controller returns with a new pod patched with an Illumio init container.
5. Init container starts in the pod, and periodically checks the policy status of the pod using the Kubelink status server.
6. At the same time, Kubelink is preparing a policy for the new pod, and is sending the policy to the pod's C-VEN.
7. The C-VEN applies policy to the pod, and sends an acknowledgment to Kubelink.
8. Kubelink reports that the policy is now applied to the init container.
9. The Init container exits, and allows the original container to start.
- 10 If a policy is not applied within the configured time (see [Configuration \[23\]](#) section for Helm Chart `waitForPolicy.timeout` parameter), the init container exits anyway, and allows the original container to start.

The Illumio init container must be accessible from all namespaces that use Wait for Policy. An easy way to ensure this accessibility is to make init available from a public repository. However, a private repository can be used if you manage the secret deployment properly, such as by deploying init from the same repository as all other containers, or by using a secret management tool.

Configuration

The Wait For Policy feature is disabled by default. To enable it, change the `waitForPolicy.enabled` value to `true` in the Helm Chart `illumio-values.yaml` file. The following is the default Helm Chart configuration for Wait For Policy:

```
## Wait for Policy - Illumio delays the start of Pods until policy is
## applied
waitForPolicy:
  ## @param waitForPolicy.enabled Enable Wait for Policy feature
  enabled: false
  ## @param waitForPolicy.ignoredNamespaces List of namespaces where
  ## Illumio
  ## doesn't delay start of Pods. kube-system and
  ## illumio-system name are ignored by Kubelink for this feature by
  ## default,
  ## even if not specified in this list.
  ignoredNamespaces:
    - kube-system
    - illumio-system
  ## @param waitForPolicy.timeout How long will pods wait for policy, in
  ## seconds
  timeout: 130
```

Pods starting in namespaces listed in `ignoredNamespaces` start immediately, without an Illumio init container injected into them. The namespaces `kube-system` and `illumio-system` are always ignored by the MutatingAdmissionWebhook Controller running in Kubelink, even if those are not specified in the configuration. The default value of `ignoredNamespaces` contains `kube-system` and `illumio-system` for reference, and can be extended with custom namespaces.

The `timeout` value is a total allowed run time of the init container. After this time elapses, the init container exits even if policy is not applied, and allows the original container to start.

Updates for Core for Kubernetes 5.2.0

Kubelink

Resolved Issues

- **Helm: pull secret to quay gets created even if no credentials are set** (E-119659)
Helm chart now creates Illumio pull secret only if credentials are specified and also externally passed secret names are included.
- **Kubelink: error concurrent map read and map write** (E-119626)
Kubelink was restarted because previous container exited with the message "fatal error concurrent map read and map write."
- **Kubelink: Update base image to address vulnerabilities** (E-119429)
The Unified Base Image was upgraded to address CVE-2023-45288.
- **Kubelink needs to have higher priority assigned to avoid going to evicted state** (E-113920)
If the Kubernetes cluster encounters problems or runs out of space, Kubelink was the first pod to be put into the evicted state, which caused policy enforcement to fail. To prevent permanent eviction, in Helm chart version 5.2.0 the Kubelink Deployment and C-VEN DaemonSets are assigned priority classes by default -- `system-cluster-critical` for Kubelink and `system-node-critical` for C-VEs.

C-VEN

Resolved Issues

- **CVEN: Update base image to address vulnerabilities** (E-119428)
The 23.4 C-VEN Unified Base Image was upgraded to the latest UBI9 to address vulnerabilities described in CVE-2014-3566, CVE-2014-3566, CVE-2014-3566, CVE-2022-3358, and CVE-2023-27533.
- **Cannot deploy C-VEN to GKE when using default OS** (E-116506)
For GKE clusters, when using the default cluster OS (Container-Optimized OS from Google), the node filesystems are read-only. This prevented C-VEN from mounting `/opt/illumio_ven_data` and writing into it for persistent storage.
To resolve this issue, a new variable `cven.hostBasePath` was added to the 5.2.0 Helm Chart to specify where the C-VEN DaemonSet mounts its data directory. The default value is `/opt`. Use this variable to specify where the C-VEN DaemonSet mounts its data directory. If using a Container-Optimized OS, you can set the directory to `/var`.
- **[CVEN]: Failed to load policy** (E-115231)
The log message "Error: Failed to load policy" was appearing during scenarios that were obvious or expected. The log level for this message has been changed from Error to Info.
- **Re-adding node does not re-pair it** (E-98120)
When deleting and then re-adding the same node, the node would not reappear, and its policy disappeared.

Illumio Core for Kubernetes Release Notes 5.1

Published: September 4, 2024

Core for Kubernetes 5.1.10

Compatible PCE Versions: 23.5.10 and most later releases

Current Illumio Core for Kubernetes Version: 5.1.10, which includes:

- C-VEN version: 23.3.1
- Kubelink version: 5.1.10
- Helm Chart version: 5.1.10

Before deploying any Illumio Core for Kubernetes 5.1.x version, confirm your PCE version supports it. For example, currently Illumio Core for Kubernetes versions 5.1.0 and 5.1.2 are supported **only** with PCE versions 23.5.10 (for On Premises customers) or 24.1.x (for SaaS customers), but NOT on PCE versions 23.5.1 or 23.6.0, or any lower versions. For complete compatibility details, see the [Kubernetes Operator OS Support and Dependencies](#) page on the Illumio Support Portal.

Illumio Core release numbering uses the following format: "a.b.c-d+e".

- "a.b": Standard or LTS release number, for example, "2.2"
- ".c": Maintenance release number, for example, ".1"
- "-d": Optional descriptor for pre-release versions, for example, "preview2"

Limitations

• NodePort

The following limitations exist regarding NodePort policy enforcement and flows:

- Only NodePort Services with `externalTrafficPolicy` set to "cluster" are supported. (This is the default and most frequently used value for this setting.)
- When writing rules to allow traffic to flow from external (to the cluster) entities and NodePort Service, the source side of the rule must contain all nodes in the cluster.

For example, given the following setup:

- Worker nodes in the cluster are labeled as Role: Worker Node
- Clients accessing the Service running in the Kubernetes cluster are labeled Role: Client
- The NodePort Service is labeled Role: Ingress

Normally, the rule would be written as Role: Client -> Role: Ingress. However, for this release the rule must also include all nodes in the cluster to work correctly: Role: Client + Role: Worker Node -> Role: Ingress.

• Flat Network support in CLAS mode

Using EKS or AKS in a flat network topology, such as EKS with AWS VPC CNI or AKS with Azure CNI, is not supported in CLAS-enabled clusters.

Updates for Core for Kubernetes 5.1.10

Kubelink

Resolved Issues

- **Last updated policy timestamp for C-VEs reflects Kubernetes Workload policy changes** (E-118372)
The last updated policy timestamp on C-VEs now updates after a C-VE successfully updates the policy for its pods.
- **Unexpected Potentially Blocked traffic in Explorer (CLAS mode)** (E-116105)
In CLAS environments, some allowed traffic flows were wrongly reported as Potentially Blocked because of missing IP sets in the firewall test database.

Updates for Core for Kubernetes 5.1.7

Kubelink

Resolved Issues

- **Kubelink: policy service blocked when agent disconnects while receiving policy message** (E-117099)
In some situations, policies stopped being sent due to a policy channel lock after C-VE disconnected while receiving a policy update.
- **Kubelink: policy service blocked if one agent is not reading policy message** (E-116967)
In some situations, policies stopped being sent after a C-VE became unresponsive.
- **Kubelink can't save sets because of message size limit** (E-116825)
Policy updates were being interrupted when large policy sets were being sent. The message size has been increased to permit larger policy transmissions .
- **Kubelink: workload events processing is slowed down by policy updates** (E-116706)
The processing of workload events from Kubernetes sometimes became slow when handling thousands of Kubernetes Workloads, or the policy PCE requests were taking too long, or if there was no previous policy version in storage.
- **Kubelink sends wrong workload href in policy ACK request** (E-116640)
In some CLAS-enabled clusters that host large numbers of workloads, the Kubernetes Workloads page showed an old policy apply date. Kubelink incorrectly sent a policy ACK for some Kubernetes Workloads with the host workload URI. The PCE responded with a 406 error, and a "no policy" ACK was stored.

Updates for Core for Kubernetes 5.1.3

Kubelink

Resolved Issues

- **Kubelink can't save policy to storage** (E-116539)
Kubelink could not store cluster policy due to storage size limitations. To permit increased storage sizes, the Helm chart now includes new `resources` values under the `storage` component, as well as under `cven` and `kubelink` (note that amounts are in MiB not MB, and GiB not GB):

```

kubelink:
  resources:
    limits:
      memory: 500Mi
    requests:
      memory: 200Mi
      cpu: 200m

cven:
  resources:
    limits:
      memory: 300Mi
    requests:
      memory: 100Mi
      cpu: 250m

storage:
  resources:
    limits:
      memory: 500Mi
    requests:
      memory: 200Mi
      cpu: 100m

```

- **Pod to pod flows and pod labels are missing from Explorer search results** (E-116271, E-116272)

In CLAS-enabled clusters, Explorer was not showing pod labels, only workload labels. In addition, Explorer did not return some traffic flows, even when trying with label-based search, or port-based search, or even searching using workload labels + pod labels. Also, pod traffic was being mapped to workloads.

Updates for Core for Kubernetes 5.1.2

Kubelink

Resolved Issues

- **Helm Chart: etcd storage size limit** (E-115417)
Kubelink in CLAS mode uses etcd as a local cache for policy and runtime data. The Helm Chart now accepts a new variable called `storage.sizeGi` to set the size (in GiB not GB) of ephemeral storage. The default value is 1.
- **Kubelink - Unable to process policy with custom iptables rules** (E-115250)
Kubelink in CLAS mode failed to process policy received from the PCE when custom iptables rules were present, producing the error message "json: cannot unmarshal object into Go struct field."
- **Kubelink to PCE connectivity issues - connection reset by peer** (E-115049)
CLAS-enabled Kubelink was entering degraded mode too soon because of PCE connectivity problems. Now Kubelink also retries requests after network and OS errors, which avoids premature degraded mode entry.
- **C-VEN reporting potentially blocked traffic between worker nodes** (E-114691)
CLAS processing of outbound rules to a ClusterIP Service replaced the "All Services" destination in the rule with actual ports from the Kubernetes Service. If a destination label included a Kubernetes Service, this caused a missing iptables rule between nodes.
- **Max policy message size between Kubelink and C-VEN is too small** (E-113714)

The default gRPC message size was set to too small of a value, which caused C-VEs to reject policy messages that were larger than this value. The default gRPC message size is now larger, to avoid this problem.

Updates for Core for Kubernetes 5.1.0

What's New in the 5.1.0 Release

The following are new and changed items in the 5.1.0 release from the previous releases of C-VE and Kubelink:

- **New CLAS architecture option**

Kubelink now can be deployed with a Cluster Local Actor Store (CLAS) module, which manages flows from C-VEs to PCE, and policies from PCE to C-VEs. The CLAS-enabled Kubelink tracks individual pods, and when they are created or destroyed, instead of this being communicated directly to the PCE. To migrate from an existing (non-CLAS) environment to a CLAS-enabled one, set the `clusterMode` parameter to `migrateLegacyToClas` in your deployment YAML file (typically named `illumio-values.yaml`). See the `README.md` file accompanying the Helm Chart for full details on this and other Helm Chart parameters.

- **Workloads more closely match Kubernetes architecture**

In CLAS-enabled environments, workloads are now conceptually tied to their containers, instead of being referred to in context of their pods, which more closely matches Kubernetes practice. To reflect this change, such workloads in CLAS environments are called *Kubernetes Workloads*, regardless of what containers have been spun up or destroyed to run the applications. In non-CLAS environments, the existing term *Container Workloads* is still used as in prior releases, corresponding to Pods. In mixed environments (with both non-CLAS and CLAS-enabled clusters), the PCE UI shows both Container Workloads and Kubernetes Workloads, as appropriate.

- **Degraded mode for CLAS-enabled Kubelink**

If a CLAS-enabled Kubelink detects that its connection with the PCE becomes unavailable (for example, due to connectivity problems or an upgrade), Kubelink by default enters a *degraded mode*. In this degraded mode, new Pods of existing Kubernetes Workloads get the latest policy version cached in CLAS storage. When Kubelink detects a new Kubernetes Workload with exactly the same label sets and in the same namespace as an existing Kubernetes Workload, Kubelink delivers the existing, cached policy to Pods to this new Workload. If Kubelink cannot find a cached policy (that is, when labels of a new Workload do not match those of any existing Workload in the same namespace), Kubelink delivers a “fail open” or “fail closed” policy based on the Helm Chart parameter `degradedModePolicyFail`. The degraded mode can also be turned on or off by the Helm Chart parameter `disableDegradedMode`.

- **Illumio annotations in CLAS mode specified on the workload and not on Pod's template**

Illumio annotations when in CLAS mode are now specified on the Kubernetes Workload and not on the pod's template.

- **Docker support dropped**

The Docker CRI is no longer supported as of the 5.0.0 release of Illumio Core for Kubernetes.

C-VE

Resolved Issue

- **Permanently delete Kubernetes Workloads after certain period when they are unpaired** (E-112362)

Kubernetes Workloads (from a CLAS environment) are pruned from the PCE one day (by default) after they are unpaired. The length of time that elapses (in seconds) before this pruning occurs is configurable with the `vacuum_entities_wait_before_vacuum_seconds` parameter, which is set in the PCE `agent.yml` file. The default value for this parameter is 86400 (24 hours).

Known Issues

- **When C-VEN starts first, a 404 from PCE when getting CLAS token** (E-109259)

When C-VEN is started first, it tries to contact the PCE in order to obtain CLAS token, but receives a 404 error. This is expected behavior for this scenario, which is only momentary. Kubelink eventually starts normally, and C-VEN obtains the CLAS tokens as expected.

- **Helm install fails with Helm version 3.12.2 but works with 3.10** (E-108128)

When installing with Helm version 3.12.2, the installation fails with a YAML parse error.

Workaround: Use Helm version 3.10, or version 3.12.3 or later.

- **Re-adding node does not re-pair it** (E-98120)

After deleting a node and re-adding the same node, the node does not reappear, and previously established policy disappears from the node.

Workaround: Uninstall and re-install Illumio Core for Kubernetes from scratch with the node present.

Kubelink

Resolved Issues

- **CLAS: NodePort - pod rules are not removed after disabling rule** (E-111689)

After disabling a NodePort rule that opens it to outside VMs, iptable entries for pods with a virtual service's targetPort were not being removed as expected. Now the pod no longer remains opened. Host iptables are removed, so traffic does not go through, and the pod ports are properly closed.

- **CLAS - The etcd pod crashes when node reboots** (E-106236)

The etcd pod would crash if one of the nodes in the cluster was rebooted.

Known Issues

- **CLAS-mode Kubelink pod gets restarted once when deploying Illumio Core for Kubernetes** (E-109284)

The Kubelink pod is restarted after deploying Illumio Core for Kubernetes in CLAS mode.

There is no workaround. Kubelink runs properly after this single restart.

- **CLAS: Container Workload Profile label change is not applied to Kubernetes Workloads, only to Virtual Services** (E-109168)

When removing labels in a Container Workload Profile, existing Kubernetes Workloads that are managed by that profile do not have their labels changed automatically to labels based on annotations. These existing Kubernetes Workloads must be updated with the `kubectl apply` command for the labels change to take effect. New Kubernetes Workloads created after the profile label change will have the new labels.

This works as designed.

Security Information for Core for Kubernetes 5.1

For information about security issues, security advisories, and other security guidance pertaining to this release, see Illumio's Knowledge Base in Illumio's Support portal.

Illumio Core for Kubernetes Release Notes 5.0.0

About Illumio Core for Kubernetes 5.0

These release notes describe the resolved issues, known issues, and related information for the 5.0.0 release of Illumio Core for Kubernetes, formerly known as Illumio Containerized VEN, or C-VEN. Illumio Core for Kubernetes also includes the related required component, Kubelink. Because of this heritage, many references to this product as "C-VEN" are still used throughout the documentation.

Document Last Revised: January 2024

Product Version

Compatible PCE Versions: 23.5.10 and later releases

Current Illumio Core for Kubernetes Version: 5.2.3, which includes:

- C-VEN version: 23.4.2
- Kubelink version: 5.2.1
- Helm Chart version: 5.0.0

Illumio Core release numbering uses the following format: "a.b.c-d+e".

- "a.b": Standard or LTS release number, for example, "2.2"
- ".c": Maintenance release number, for example, ".1"
- "-d": Optional descriptor for pre-release versions, for example, "preview2"

What's New in C-VEN and Kubelink

The following are new and changed items in this release from the previous releases of C-VEN and Kubelink:

- **New CLAS architecture option**

Kubelink now can be deployed with a Cluster Local Actor Store (CLAS) module, which manages flows from C-VEs to PCE, and policies from PCE to C-VEs. The CLAS-enabled Kubelink tracks individual pods, and when they are created or destroyed, instead of this being communicated directly to the PCE. To migrate from an existing (non-CLAS) environment to a CLAS-enabled one, set the `clusterMode` parameter to `migrateLegacyToClas` in your deployment YAML file (typically named `illumio-values.yaml`). See the `README.md` file accompanying the Helm Chart for full details on this and other Helm Chart parameters.

- **Workloads more closely match Kubernetes architecture**

In CLAS-enabled environments, workloads are now conceptually tied to their containers, instead of being referred to in context of their pods, which more closely matches Kubernetes practice. To reflect this change, such workloads in CLAS environments are called *Kubernetes Workloads*, regardless of what containers have been spun up or destroyed to run the applications. In non-CLAS environments, the existing term *Container Workloads* is

still used as in prior releases, corresponding to Pods. In mixed environments (with both non-CLAS and CLAS-enabled clusters), the PCE UI shows both Container Workloads and Kubernetes Workloads, as appropriate.

- **Illumio annotations in CLAS mode specified on the workload and not on Pod's template**

Illumio annotations when in CLAS mode are now specified on the Kubernetes Workload and not on the pod's template.

- **Docker support dropped**

The Docker CRI is no longer supported as of this 5.0.0 release of Illumio Core for Kubernetes.

NodePort Limitations

- **NodePort**

Here are some limitations around NodePort policy enforcement and flows:

- Only NodePort Services with `externalTrafficPolicy` set to "cluster" are supported. (This is the default and most frequently used value for this setting.)

- When writing rules to allow traffic to flow from external (to the cluster) entities and NodePort Service, the source side of the rule must contain all nodes in the cluster.

For example, given the following setup:

- Worker nodes in the cluster are labeled as Role: Worker Node
- Clients accessing the Service running in the Kubernetes cluster are labeled Role: Client
- The NodePort Service is labeled Role: Ingress

- Normally, the rule would be written as Role: Client -> Role: Ingress. However, for this beta1 release the rule must also include all nodes in the cluster to work correctly: Role: Client + Role: Worker Node -> Role: Ingress.

Updates for Core for Kubernetes 5.0.0-LA

C-VEN

Resolved Issues

- **Scaling a Deployment with changed labels was not being updated on PCE** (E-107274)

After deploying a workload with a non-existing label, create labels on the PCE and wait a few minutes before updating and applying the YAML to change the number of replicas. The deployment was not properly updated on the PCE. This issue is resolved.

Known Issues

- **When C-VEN starts first, a 404 from PCE when getting CLAS token** (E-109259)

When C-VEN is started first, it tries to contact the PCE in order to obtain CLAS token, but receives a 404 error. This is expected behavior for this scenario, which is only momentary. Kubelink eventually starts normally, and C-VEN obtains the CLAS tokens as expected.

- **Helm install fails with Helm version 3.12.2 but works with 3.10** (E-108128)

When installing with Helm version 3.12.2, the installation fails with a YAML parse error.

Workaround: Use Helm version 3.10, or version 3.12.3 or later.

- **Re-adding node does not re-pair it** (E-98120)

After deleting a node and re-adding the same node, the node does not reappear, and previously established policy disappears from the node.

Workaround: Uninstall and re-install Illumio Core for Kubernetes from scratch with the node present.

Kubelink

Resolved Issues

- **CLAS on IKS with Calico, the flow of ClusterIP is not displayed correctly** (E-109238)
In a CLAS environment on IKS with Calico, when running traffic to a clusterIP service from a pod, flows were being displayed incorrectly. Sometimes flows were incorrectly shown as Allowed. Other times, flows that should not be present were being shown as Blocked. This issue is resolved.
- **Kubernetes cluster falsely detected as an OpenShift cluster** (E-107910)
After deployment, Kubelink falsely detected a Kubernetes cluster as an OpenShift cluster based on misinterpretations of installed VolumeReplicationClass and VolumeReplications APIs on the cluster. This issue is resolved.
- **Problem when label from PCE was deleted after Kubelink starts** (E-107779)
When creating a new workload on PCE, Kubelink uses cached or preloaded labels to label a workload. However, if the label was deleted before the workload was actually created, the PCE responded with a 406 status error. This issue is resolved.
- **Kubelink did not properly apply label mappings with PCE using two-sided management ports** (E-105391)
Label mappings were not properly applied when using the LabelMap CRD if the PCE used two-sided management ports. This issue is resolved.

Known Issues

- **CLAS: NodePort - pod rules are not removed after disabling rule** (E-111689)
After disabling a NodePort rule that opens it to outside VMs, iptables entries for pods with a virtual service's targetPort are not removed as expected. The pod is still opened. Host iptables are removed, so traffic does not go through, but the pod ports stay opened towards original IPs.
There is no workaround available.
- **Non-CLAS mode: Failed to clean up the pods** (E-109687)
After deleting a non-CLAS container cluster, the cluster gets deleted but Container Workloads are not deleted, and remain present.
- **CLAS-mode Kubelink pod gets restarted once when deploying Illumio Core for Kubernetes** (E-109284)
The Kubelink pod is restarted after deploying Illumio Core for Kubernetes in CLAS mode.
There is no workaround. Kubelink runs properly after this single restart.
- **CLAS: Container Workload Profile label change is not applied to Kubernetes Workloads, only to Virtual Services** (E-109168)
In CLAS environments, after changing a label in a Container Workload Profile, the Kubernetes Workloads that are managed by that Profile do not have their labels changed as expected. No changes to these Kubernetes Workloads occur even when the Profile is changed to "No Label Allowed;" the original labels remain in the Kubernetes Workloads. However, Virtual Services managed by that profile do successfully have their labels changed properly.
No workaround is available.
- **CLAS - The etcd pod crashes when node reboots** (E-106236)
The etcd pod crashes if one of the nodes in the cluster is rebooted.
There is no workaround available.

Security Information for Core for Kubernetes 5.0.0-LA

For information about security issues, security advisories, and other security guidance pertaining to this release, see Illumio's Knowledge Base in Illumio's Support portal.

Illumio Core for Kubernetes Release Notes 4.3.0

What's New in Kubernetes 4.3.0

These release notes describe the resolved issues and related information for the 4.3.0 release of Illumio Core for Kubernetes, formerly known as Illumio Containerized VEN, or C-VEN.

Illumio Core for Kubernetes also includes the related required component, Kubelink. Because of this heritage, many references to this product as "C-VEN" are still used throughout the documentation.

Here are the new and changed items in this release:

- **New Kubelink 3.3.1**

This Kubernetes 4.3.0 release includes an upgraded Kubelink component, version 3.3.1 .

- **New C-VEN 22.5.14**

This Kubernetes 4.3.0 release includes an upgraded C-VEN component, version 22.5.14.

**NOTE**

C-VEN 22.5.14 requires PCE version 22.5.0 or later, and supports PCE 23.3.0 or later.

Security Information

For information about security issues, security advisories, and other security guidance pertaining to this release, see Illumio's Knowledge Base in Illumio's Support portal.

Base Image Upgraded

The C-VEN base OS image is upgraded to minimal UBI for Red Hat Linux 7.9-979.1679306063, which is available at <https://catalog.redhat.com/software/containers/ubi7/ubi-minimal/5c3594f7dd19c775cddfa777>.

Customers are advised to upgrade to Core for Kubernetes 4.1.0 or higher for these security fixes.

Product Version

Compatible PCE Versions: 22.5.0 and later releases

Current Illumio Core for Kubernetes Version: 4.3.0, which includes:

- C-VEN version: 22.5.14
- Kubelink version: 3.3.1
- Helm Chart version: 4.3.0

Illumio Core release numbering uses the following format: "a.b.c-d+e".

- “a.b”: Standard or LTS release number, for example, “2.2”
- “.c”: Maintenance release number, for example, “.1”
- “-d”: Optional descriptor for pre-release versions, for example, “preview2”

Updates for Core for Kubernetes 4.3.0

C-VEN

Resolved Issues

- **C-VEN support report does not contain container workload firewalls** (E-106932)

VEN support reports for C-VEs were missing the active firewall information for all container workloads. This issue is resolved. Support reports now include full firewalls from each network namespace, as gathered by `iptables-save` and `ipset list` output.

- **Conntrack tear-down for containers with policy updates** (E-44832)

Although policy was changed to block a container workload from talking to another, traffic was still passing between the workloads, due to a conntrack connection remaining incorrectly active. This issue is resolved. Conntrack connections on sessions affected by a policy change are now properly torn down.

Known Issue

- **C-VEs not automatically cleaned up after AKS upgrade** (E-103895)

After upgrading an AKS cluster, sometimes a few duplicate C-VEs might not be automatically removed as part of the normal upgrade process, and remain in the PCE as “non-active.” Note there is no compromise to the security or other functionality of the product.

Workaround: Manually prune the extra unmigrated C-VEs from the PCE by clicking the **Unpair** button for each of them.

Kubelink

Resolved Issue

- **Kubelink does not pair with PCE when a separate management port is used** (E-107001)

Kubelink would crash after start when the PCE had `front_end_management_https_port` set to 9443 instead of 8443, because of a missing `label_map` URL. This issue is resolved.

Known Issue

- **Kubelink does not properly apply label mappings with PCE using two-sided management ports** (E-105391)

Label mappings are not properly applied when using the LabelMap CRD if the PCE uses two-sided management ports.

Workaround: Use the label map feature only with a PCE that uses only one management port.

Illumio Flowlink Release Notes for Release 1.4.0

December 2024

Product Version

Flowlink Version: 1.4.0

Compatible PCE Version: PCE 19.3.0 and later releases

Standard versus LTS Releases

For information about Standard versus Long Term Support (LTS) releases, see [Versions and Compatibility](#) in the Illumio Support portal (log in required).

Illumio Core release numbering uses the following format: "a.b.c-d+e".

- "a.b": Standard or LTS release number, for example, "2.2"
- ".c": Maintenance release number, for example, ".1"
- "-d": Optional descriptor for pre-release versions, for example, "preview2"

New Features in Illumio Flowlink 1.4.0

The following new features were added in Illumio Flowlink 1.4.0.

- **Support for FIPS compliance on RHEL 9**

Beginning with this release, Flowlink now supports FIPS compliance on RHEL 9. For more information, see [FIPS Compliance for Flowlink](#).

- **Increased buffer size**

Flowlink buffer size is increased to 65kb. This was done to address an issue where FlowLink failed to process large UDP packets.

- **Support for ingesting multiple flow types**

Beginning with this release, the FlowLink text flow collector supports flows with any IP protocol number, not just UDP, TCP and ICMP.

Resolved and Known Issues in FlowLink 1.4.0

Resolved Issue

Flowlink became non-responsive (E-114431)

A parsing issue with the IPFIX packet caused Flowlink 1.3.0 to become non-responsive, requiring a manual restart. This issue is fixed with this release.

Known Issue

No Automatic Restart Following Reboot (E-15146)

Flowlink is not installed as a service, nor does it support a High Availability (HA) configuration. As such, it doesn't restart automatically if the host fails or is rebooted. In those cases, you need to restart Flowlink manually.

Illumio Flowlink Release Notes 1.3.0

Product Version

Flowlink Version: 1.3.0

Compatible PCE Version: PCE 19.3.0 and later releases

Standard versus LTS Releases

For information about Standard versus Long Term Support (LTS) releases, see [Versions and Compatibility](#) in the Illumio Support portal (log in required).

Illumio Core release numbering uses the following format: “a.b.c-d+e”.

- “a.b”: Standard or LTS release number, for example, “2.2”
- “.c”: Maintenance release number, for example, “.1”
- “-d”: Optional descriptor for pre-release versions, for example, “preview2”

New Feature in Flowlink 1.3.0

Support for HTTP/HTTPS Proxy

Beginning with this release, Flowlink now supports HTTP/HTTPS proxy. When Flowlink is running behind a proxy or in a corporate network and the PCE is in the cloud, Flowlink can now access the PCE via HTTP/HTTPS proxy configurations.

The following configuration parameter is available to define an HTTP/HTTPS proxy:

```
proxy_config:
  https_proxy: <HTTPS_PROXY>
  http_proxy: {} <HTTPS_PROXY>{}
```

See the following example of Flowlink YAML configuration file:

```
proxy_config:
  https_proxy: http://proxy.corporate.com:3128
  http_proxy: http://proxy.corporate.com:3128
```

In the above example, the HTTP/HTTPS proxy is running on FQDN `proxy.corporate.com`{`port: 3128`}.

Resolved Issue in Flowlink 1.3.0

The following security issue was resolved in this release:

go-lang upgraded to 1.19.11 (E-107998)

The go-lang package was upgraded to 1.19.11 to address CVE-2023-29406.

Illumio NEN Release Notes 2.6

Product Version

NEN Version: 2.6.30

Compatible PCE Versions: 21.5.1 – 24.4

Standard versus LTS Releases

For information about Standard versus Long Term Support (LTS) releases, see [Versions and Compatibility](#) in the Illumio Support portal (log in required).

Illumio Core release numbering uses the following format: “a.b.c-d+e”.

- “a.b”: Standard or LTS release number, for example, “2.2”
- “.c”: Maintenance release number, for example, “.1”
- “-d”: Optional descriptor for pre-release versions, for example, “preview2”

Release Types and Numbering

Illumio Core release numbering uses the following format: “a.b.c-d+e”

- “a.b”: Standard or LTS release number, for example “2.2”
- “.c”: Maintenance release number, for example “.1”
- “-d”: Optional descriptor for pre-release versions, for example “preview2”

Resolved Issues in NEN 2.6.30

- **ACL Generation Hangs if Switch Policy Includes Multicast Addresses** (E-117247)
If a PCE switch policy includes a multicast address, the NEN became inoperative when trying to generate ACLs for that policy. This issue is fixed.
- **Rules referencing some protocols didn't appear in ACLs** (E-117013)
PCE policy rules referencing certain protocols didn't appear in NEN-generated switch ACLs. This issue is fixed. With this release, the NEN now supports all PCE-supported protocols.

Known Issues in NEN 2.6.30

There are no known issues in this release.

Resolved Issue in NEN 2.6.20

- **Potential unexpected denial of some traffic flows** (E-114782)

In NEN releases 2.6.10 and earlier, while in Selective Enforcement the NEN applied ACL deny rules before allow rules, which could inadvertently deny flows that you want to allow. This issue is fixed. Beginning with this release, NENs now apply ACL allow rules before deny rules.

Known Issues in NEN 2.6.20

There are no known issues in this release.

Resolved Issues in NEN 2.6.10

- **In NEN HA pair SLB jobs aborted in some circumstances** (E-112912)

In a NEN HA pair, after the Secondary Node served temporarily as the Primary Node and then returned to its normal Secondary role, an issue occurred where SLB policy jobs on the Secondary Node were aborted and the database wasn't being reset to allow other SLB policy jobs to run on those SLBs. The issue stems from the timeout behavior being too aggressive. This issue is resolved: the Secondary Node now gracefully returns to its normal role.

- **Unnecessary word prevented some rules from being applied in IBM AS400 integration** (E-111870)

In an IBM AS400 integration, the ACL files generated by the NEN contained the word `permit` at the end on each rule line, which prevented Precisely from ingesting the rules. This issue is resolved: `permit` is no longer appended at the end of rules.

Known Issues in NEN 2.6.10

There are no known issues in this release.

2.6.10 Security Information

- Upgraded netaddr-1.5.0.gem to 2.0.4 or higher to address CVE-2019-17383
- Upgraded tzinfo-1.2.7.gem to 0.3.61,1.2.10 or higher to address CVE-2022-31163
- Upgraded json-1.8.6.gem to 2.3.0 or higher to address CVE-2020-10663
- Upgraded activesupport-5.2.4.2.gem to 5.2.4.3,6.0.3.1 or higher to address CVE-2020-8165 CVE-2023-22796
- Upgraded addressable-2.7.0.gem to 2.8.0 or higher to address CVE-2021-32740
- Upgraded cURL to v7.87.0 on the Illumio NEN to address CVE-2019-5443 & CVE-2019-3882

Resolved Issues in NEN 2.6.1

- **Timeout issue prevented NEN from updating SLB Policy** (E-107324)

Due to the shortness of the default connect timeout in the CURL library (5 minutes), the NEN was susceptible to timing out when trying to connect to the PCE. This in turn

prevented the NEN from updating policy on the SLB. The issue was resolved by adding the following configurable PCE runtime_env parameter:

`pce_policy_connect_timeout_minutes`

- Default value: 10 minutes
- Minimum value: 3 minutes

- **Handling of SLB empty data response led to erroneous "deletion pending" state** (E-106930)

An issue caused an F5 SLB to return an empty data response when the NEN queried it for virtual servers, even though managed virtual servers actually existed on the SLB. This occurred at a time when the NEN was programming the SLB. This in turn caused the PCE to put these existing virtual servers in a 'deletion pending' state. After the NEN was restarted, all the virtual servers were discovered and available on the PCE Web Console. This issue is resolved. The NEN will now ignore empty data responses if the SLB has managed virtual servers or is currently being programmed with policy.

- **Route domain length prevented virtual server discovery** (E-106800)

F5 SLB virtual servers with route domains longer than two digits weren't discovered by the NEN and consequently weren't displayed on the PCE Web Console. This issue is resolved. The NEN now recognizes route domains up to five digits in length.

Known Issues in NEN 2.6.1

There are no known issues in this release.

Resolved Issues in NEN 2.6.0

- **Unable to deactivate the NEN** (E-104053)

In a certain circumstance (described below), after using the PCE Web Console to remove all the SLBs and associated virtual servers from the NEN, users were unable to deactivate the NEN. Details are as follows:

1. The user removed SLBs through the PCE Web Console.
2. As the SLBs no longer existed on the PCE, the NEN couldn't inform the PCE of their state.
3. This prevented the NEN from removing the SLBs correctly from its database.
4. This caused the NEN to think it was still managing the SLBs.
5. This in turn prevented the user from deactivating the NEN.

Circumstance: At the time the user removed the SLBs through the PCE Web Console, the associated virtual servers were unmanaged.

This issue is resolved. The NEN now recognizes when the SLB is being removed and no longer tries to inform the PCE of changes in SLB state. This allows the NEN to remove SLBs from its database correctly.

- **NEN 2.5.2 Failed to Update SLB Policy** (E-103432)

An issue caused the NEN policy process to hang while sending an SLB policy request to the PCE. The NEN issue was resolved by adding a configurable PCE policy request timeout to the NEN's code. To configure the optional timeout, use the following runtime environment variable:

`pce_policy_request_timeout_minutes`

- Default value: 10 minutes
- Minimum value: 3 minutes

- **Extraneous API call to the load balancer** (E-96324)

The NEN made an extraneous GET API call to the AVI Advantage Load Balancer for programming the virtual server. This issue is resolved. The NEN no longer makes this extraneous API call.

Known Issues in NEN 2.6.0

There are no known issues in this release.

Illumio NEN Release Notes 2.5

Product Version

NEN Version: 2.5.2

Compatible PCE Versions: 21.5.1 – 24.4

Standard versus LTS Releases

For information about Standard versus Long Term Support (LTS) releases, see [Versions and Compatibility](#) in the Illumio Support portal (log in required).

Illumio Core release numbering uses the following format: “a.b.c-d+e”.

- “a.b”: Standard or LTS release number, for example, “2.2”
- “.c”: Maintenance release number, for example, “.1”
- “-d”: Optional descriptor for pre-release versions, for example, “preview2”

Resolved Issue in NEN 2.5.2.A1

NEN 2.5.2 Failed to Update SLB Policy (E-103432)

An issue caused the NEN policy process to hang while sending an SLB policy request to the PCE. The NEN issue was resolved by adding a configurable PCE policy request timeout to the NEN's code. To configure the optional timeout, use the following runtime environment variable:

```
pce_policy_request_timeout_minutes
```

```
pce_policy_request_timeout_minutes
```

- Default value: 10 minutes
- Minimum value: 3 minutes

Known Issues in NEN 2.5.2.A1

There are no known issues in this release.

Resolved Issues in NEN 2.5.2

- **Tamper checking was prevented on the SLB** (E-98697)

In some circumstances, the PCE may inform the NEN that there is a policy update for an SLB when there isn't actually an update. This may prevent the NEN from running tamper checking on the SLB. To help resolve this condition going forward, if the NEN is told about a non-existent policy update for the SLB and the time for performing a tamper check has lapsed, the NEN will now perform a full policy check for the SLB.

- **Problems caused when deleting a VS before unmanaging it on the PCE** (E-97909)

Deleting an enforced VS from an SLB without first unmanaging the VS on the PCE interfered with the NEN's attempt to remove policy from the SLB, which prevented the NEN from correctly handling error responses from the SLB. This caused the NEN to:

- Retry removing policy multiple times, which put a load on the SLB.
- Run multiple simultaneous SLB programming jobs.

This issue is resolved. Now, the NEN no longer retries sending APIs requests when 4xx API response codes are returned during the removal of policy from a VS and only runs one programming job per SLB at a time.

Known Issues in NEN 2.5.2

There are no known issues in this release.

Resolved Issue in NEN 2.5.1

- **Excessive NEN API GET calls to F5 prevented policy programming** (E-96989)

When trying to unmanage F5 Virtual Servers, NEN API GET requests to the F5 encountered slower than expected response times, which lead to the following sequence of events:

1. Responses from the F5 timed out.
2. Which in turn caused the NEN to retry its requests repeatedly.
3. Lacking timely F5 responses, the NEN ran multiple simultaneous unmanage jobs for VSs.
4. This caused the NEN to DDOS the F5 with `GET /mgmt/tm/security/firewall/policy?expandSubcollections=true` API calls.
5. **Result:** This overloaded the F5 and caused policy programming to fail due to API timeouts.

This issue is resolved. The NEN now serializes unmanage VS jobs for server load balancers.

Known Issues in NEN 2.5.1

There are no known issues in this release.

Resolved Issues in NEN 2.5.0

- **When processing multi-paged AVI API responses, policy programming failed** (E-95740)

While processing multiple-paged AVI `networksecuritypolicy` API responses during policy programming, the NEN incorrectly stored the policy ID to associate the policy to its rules. This caused the NEN to point to an invalid memory location, which in turn caused `network_enforcement_policymgr` to crash and policy programming to fail. This issue is resolved.

- **Problem when tamper checking AVI SLBs in multi-page AVI API responses** (E-95546)

An invalid check of the returned API response occurred when the NEN performed tamper checking of multiple-paged AVI `networksecuritypolicy` API responses. This issue could have caused the NEN to miss some Illumio `networksecuritypolicies`. The NEN could then have interpreted the missed policy as policy tampering, triggering a check on the SLB for those missing policies, resulting in no errors found. The issue was resolved by fixing the API response checks to make sure the NEN retrieved all `networksecuritypolicies` from the AVI SLB.

- **Generating switch policy failed in a HA configuration** (E-94344)

Generating policy by running the `switch policy generate` command on the primary node of an High Availability (HA)-configured NEN (from either the UI or from the CLI) could cause policy generation to fail and return the following error message: *This command can only be run on the node running the primary Network Enforcement Service*. This issue is resolved. The command can now be run on any NEN node - primary or secondary - that is running the `network_enforcement` service.

- **Policy update failed when new Illumio iRules weren't applied correctly** (E-93921)

An error occurred when trying to create a policy that applied a new Illumio iRule to block an existing non-Illumio iRule. The error prevented policy from being updated. This issue is resolved. New Illumio iRules are now applied before non-Illumio iRules.

- **PCE sent multiple unnecessary policy updates to the NEN** (E-93851)

Illumio updated the NEN 2.5.0 to address this issue in the PCE. In previous releases, the PCE sent policy updates to the NEN even when the SLB virtual services address list hadn't changed. This issue occurred because pods frequently go down and come back up and that triggered a policy job with "no address list changes" in the PCE. In this release, this issue is resolved for the NEN. The issue will be resolved in the PCE in a future release. In this release, the NEN optimizes the addresses in the address list and stores the SHA of the sorted address list for comparison between policies. The PCE ignores policy updates that don't contain changes in the overall address list by comparing the SHA of new address list with the previous one.

- **F5 AM policy deletion for a deleted VS failed** (E-92008)

When a NEN tried to delete a policy from an F5 BIG-IP Advanced Firewall Manager (F5 AFM) for a virtual server (VS) that had been deleted, the NEN defaulted to treating the VS like a non-AS3 managed VS. This resulted in the policy remaining on the F5 AFM. This issue is resolved and the NEN now makes sure (as originally intended) that no artifact of a policy remains on the SLB for the deleted VS.

Known Issues in NEN 2.5.0

There are no known issues in this release.

Illumio NEN Release Notes 2.4

Product Version

NEN Version: 2.4.10

Compatible PCE Versions: 21.5.1 – 24.4

Standard versus LTS Releases

For information about Standard versus Long Term Support (LTS) releases, see [Versions and Compatibility](#) in the Illumio Support portal (log in required).

Illumio Core release numbering uses the following format: “a.b.c-d+e”.

- “a.b”: Standard or LTS release number, for example, “2.2”
- “.c”: Maintenance release number, for example, “.1”
- “-d”: Optional descriptor for pre-release versions, for example, “preview2”

Resolved Issue in NEN 2.4.10

F5 AFM Policy Deletion for a Deleted VS Failed (E-92008)

When a NEN tried to delete a policy from an F5 BIG-IP Advanced Firewall Manager (F5 AFM) for a virtual server (VS) that had been deleted already, the NEN defaulted to treating the VS like a non-AS3 managed VS. This resulted in the policy remaining on the F5 AFM. This issue is resolved and the NEN now makes sure (as originally intended) that no artifact of a policy remains on the SLB for a deleted VS.

Known Issues in NEN 2.4.10

There are no known issues in this release.

Resolved Issues in NEN 2.4.0

• **VS filtering failed to work correctly on secondary NEN nodes** (E-90850)

The secondary NEN node didn't perform Virtual Server (VS) filtering even though VS filtering was enabled on the NEN. This meant that VS filtering occurred only on the primary NEN node, which sometimes caused the VS to appear and disappear in the PCE Web Console.

• **For an AVI SLB, NENs reported tenant names incorrectly in the non-admin tenant space** (E-90758)

When discovering non-admin tenant Virtual Servers on an AVI multi-tenant Server Load Balancer (SLB), the NEN reported Virtual Server names according to their tenant **UUID**

instead of their tenant **name** (**Infrastructure > Load Balancers > AVI SLB > Virtual Servers** tab). The NEN also used the tenant UUID in the API header it sent to the AVI SLB when it tried to program the Virtual Server. This prevented policy from being programmed on those Virtual Servers. This issue is resolved; NENs now correctly use the tenant name of discovered Virtual Servers.

- **When adding a switch, the list of supported switches was incomplete for the attached NENs** (E-85844)

Given two active NENs attached to a PCE, each a different version supporting different switches:

When adding a new switch through the PCE Web Console, the **Manufacturer** drop down list showed only switches that are supported by the first NEN in the **NEN host name** drop down list. This occurred regardless of which NEN host the user selected. The incomplete list of switches could've prevented users from selecting the precise switch type they were trying to integrate or might have lead them to select a switch type that's not supported by the selected NEN host. This issue is resolved. The **Manufacturer** list now shows the switch(es) supported by whichever host is selected in the **NEN host name** drop down list.

- **Memory leak in NEN process** (E-85114)

When programming a large number of virtual servers, excessive memory consumption in the `network_enforcement_ndconfig` process could've resulted in an out-of-memory exception in rare circumstances. This issue is resolved.

Known Issues in NEN 2.4.0

There are no known issues in this release.

Limitation in NEN 2.4.0

Enforcement Boundaries not supported for NENs

The PCE doesn't support Enforcement Boundary policies for devices attached to the NEN.

Enforcement Boundaries are a security policy model available in the Core PCE for broadly managing communication across a set of workloads, ports, and/or IP addresses. They allow you to define the end state and then the PCE implements an Enforcement Boundary to create the appropriate native firewall rules. For more, see [Enforcement Boundaries](#) .

New Document Locations

Welcome to the new and improved Illumio documentation library. These tables provide links to the new documentation locations. Remember to update your bookmarks.

Watch how our new search experience can help you find content quickly. You can filter search results by product, version, and content type.

https://product-docs-repo.illumio.com/Tech-Docs/Videos/Search_Video.mp4

- [Core \[49\]](#)
- [Cloud \[52\]](#)
- [Edge, Xpress, MSP \[52\]](#)
- [Integrations \[53\]](#)

The screenshot shows the Illumio Technical Documentation homepage. At the top, there's a navigation bar with links: Home, Cases, Community, Knowledge Base, and Training. Below this is a large orange banner with the text "Explore Illumio Documentation" and a search bar. Underneath the banner, there's a section for "Illumio Zero Trust Segmentation Platform" with a description. Below that, there are four colored buttons: CORE (orange), CLOUDSECURE (blue), ENDPOINT (yellow), and CONTAINERS (grey). Further down, there are two buttons: "AI/ML" and "Other Products". The "Integrations" section follows, listing various integrations with arrows pointing to them: IBM QRadar, Sentinel, Splunk, Netskope, ServiceNow CMDB, and Terraform. At the bottom, there's a dark grey footer with copyright information: "Copyright © 2024 | About Support | EULA | Privacy Policy".

TECHNICAL DOCUMENTATION

Home Cases Community Knowledge Base Training

Explore Illumio Documentation

Search...

Illumio Zero Trust Segmentation Platform

Discover Illumio's ZTS Platform, including getting started guides and user documentation.

ILLUMIO CORE ILLUMIO CLOUDSECURE ILLUMIO ENDPOINT CONTAINERS

AI/ML > Other Products >

Integrations

> IBM QRadar > Sentinel > Splunk
> Netskope > ServiceNow CMDB > Terraform

Copyright © 2024 | About Support | EULA | Privacy Policy

Core

Table 1. New Locations for the Illumio Documentation: Core

Top-Level Category/Topics	New Location for Category/Topics	Second Level Topics
Get Started	Application Ringfencing Tutorial	
	Glossary	
Install and Upgrade	Upgrading Illumio Core: Why and How	
	VEN Installation and Upgrade Guide	Prepare for VEN Installation Set Up PCE for VEN Installation VEN Installation and Upgrade VEN Installation and Upgrade with VEN CTL VEN Reference
	Endpoint Concepts Guide	NLA Support for Endpoints
	Endpoint Installation and User Guide	
	LW-VEN Installation and Configuration Guide	LW-VEN Requirements and Limitations Install and Configure the Illumio LW-VEN Service Manage and Troubleshoot the LW-VEN
	Illumio Core for Kubernetes and Openshift	
Release Notes	What's New and Release Notes for 24.4 What's New and Release Notes for 24.2.11 What's New and Release Notes for 24.2.10 What's New and Release Notes for 24.2 Kubernetes What's New and Release Notes for 5.2, 5.1, 5.0, 4.3.0	
Use Core	Security Policy Guide	Security Policy Objects Workloads Create Security Policy Policy Enforcement

Top-Level Category/Topics	New Location for Category/Topics	Second Level Topics
		Secure Workload Connections
	Visualization Guide	Visualization Tools Dashboards Vulnerability Map
Administer	PCE Administration Guide	Overview of PCE Administration Connectivity Configuration for PCE Access Configuration for PCE
	VEN Administration Guide	Overview of VEN Administration VEN State VEN Deactivation and Unpairing Monitor and Diagnose VEN Status
	Events Administration Guide	Overview of Events Administration Events Described Events Setup Traffic Flow Summaries
	PCE CLI Tool Guide	Overview of the CLI Tool Installation and Authentication CLI Tool Commands for Resources CLI Tool Tutorials
Develop	REST API Developer Guide	REST API Reference
	REST API Public Schemas 24.4 (Zipped File), REST API Public Schemas 24.2.10 (Zipped File)	
	24.4 OpenAPI Specification (JSON) 24.2.10 OpenAPI Specification (JSON)	
	Illumio Core REST API Getting Started Guide. This content is no longer available.	

Top-Level Category/Topics	New Location for Category/Topics	Second Level Topics
Connect	Flowlink Configuration and Usage Guide	Flowlink Configuration Flowlink Usage
	NEN Installation and Usage Guide	NEN Installation and Configuration Load Balancers and Virtual Servers for the NEN NEN Integration with Switches
Support	Knowledge Base Training Community Contact Support	
	Documentation Archives	
	Legal Notices	
	Open Source Licensing Disclosure	
	Illumio 24.4 Documentation Library	
Archived Documentation	Log in to view archived documentation on Support.	

Cloud

Table 2. New Locations for the Illumio Documentation: Cloud

Top-Level Category/Topics	New Location for Category/Topics
Get Started	Getting Started
Release Notes	Current Release Notes
Visualize	Visualize
Define	Define Deployments and Applications
Policy	Policy Model
Administer	User Management
Reference	Onboarding AWS
Support	Legal Notices
	Knowledge Base
	Training
	Community
	Contact Support

Other Products: Edge, Xpress, MSP

Table 3. New Locations for the Illumio Documentation: Edge, Xpress, MSP

Top-Level Category/Topics	New Location for Category/Topics
Other Products	Edge 22.31
	Xpress
	MSP

Integrations

Table 4. New Locations for the Illumio Documentation: Integrations

Integration	Description	New Location for Documentation and Link to App	Validated Compatibility
Ansible	Ansible modules for <ul style="list-style-type: none"> • VEN and C-VEN pairing • Label creation/update/removal 	0.2.6 Ansible Website	Ansible 2.12+PCE 22.5, 22.2, 21.5, 21.2, SaaS
IBM QRadar (SIEM)	Connector and Dashboards to view Illumio flow and event data	1.4 1.4 Integration Guide: PDF 1.3	QRadar 7.4.3+ PCE 24.1 (SaaS), 23.5, 23.2, 22.5, and 21.5 QRadar 7.4.1+ PCE 21.2, 19.3, SaaS
IBM QRadar (SOAR)	Provides a selective port-blocking playbook	1.0 User Guide: PDF	PCE 21.2+, SaaS
Netskope Cloud Exchange	Ensures dynamic access controls and security across hybrid and multi-cloud environments	1.0.0 Integration Guide: PDF	
Palo Alto Cortex (SOAR)	Provides a selective port-blocking playbook	1.0.1 Configuration Guide Port Blocking Playbook Guide	Cortex 6.0 (6.2, 6.5, 6.8, and master), PCE 22.2, 21.5, 21.2, SaaS
Python SDK	Python REST client for Illumio PCE APIs	1.1.3 User Guide	PCE 21.2+, SaaS
Sentinel	Azure function Apps for data ingestion, Analytics rules	3.3.0 (HTML) (PDF)	PCE SaaS
ServiceNow (CMDB)	Uses ServiceNow as the source of truth for labeling PCE workloads with R/A/E/L labels	2.1.0 Installation and Configuration Guide: PDF	Vancouver, Washington DC, Xanadu PCE 22.5, 23.2.30, 23.5.20, 24.2.10, or SaaS
Splunk (SIEM)	Connector and Dashboards to view Illumio flow and event data	TA-Illumio 3.2.4 Illumio App for Splunk User Guide v3.2.x	For 3.2.4: Splunk 9.1, 9.0, 8.2, 8.1 + PCE 21.2, 21.5, 22.2, 22.5, and SaaS

Integra- tion	Description	New Location for Doc- umentation and Link to App	Validated Compatibil- ity
Terraform	Terraform HCL scripts to man- age PCE policy and policy ob- jects	(HTML)	For 4.0.3:
		(PDF)	Splunk 9.3, 9.2, 9.1, 9.0, 8.2, 8.1 + PCE 21.5, 22.2, 22.5, 23.2, 23.5, and SaaS
		EULA	
		TA-Illumio 4.0.3	
		Illumio App for Splunk 4.0.1	
		Integration Guide	
		(HTML)	
		(PDF)	
		1.1.4	Terraform 1.4+
		User Guide	PCE 22.5, 22.2, 21.5, 21.2, SaaS

PDF Library

Download PDFs for version 24.5. If you need a PDF that's not listed in this library, send a request to [Illumio Documentation](#).



NOTE

Documentation versions 21.2 and earlier are archived and available as PDFs from the [Documentation Archives](#) library. You must log in to get access.

PDFs for Core 24.5

Table 5.

PDF	Description
What's New and Release Notes	
What's New and Release Notes for 24.5	Provides a list of new and updated features in version 24.5. Describes resolved issues.
What's New and Release Notes for 24.4	Provides a list of new and updated features in version 24.4. Describes resolved issues and known issues and applicable workarounds.
What's New and Release Notes in 24.2.x	Provides a list of new and updated features in version 24.2.11, 24.2.10, and 24.2.0. Describes resolved issues and known issues and applicable workarounds.
What's New and Release Notes in 23.5	Provides a list of new and updated features in version 23.5. Describes resolved issues and known issues and their workarounds for the Illumio Core 23.5.x release.
What's New and Release Notes in 23.2	Provides a list of new and updated features in version 23.2. Describes resolved issues and known issues and their workarounds for the Illumio Core 23.2.x release.
NEN Release Notes	
<ul style="list-style-type: none"> • 2.6.x • 2.5.x, • 2.4.x • 2.3.x • 2.1.1 • 2.0.0 	Describes resolved issues and known issues and their workarounds for the Illumio Network Enforcement Node (NEN).
Flowlink Release Notes, version 1.4.0	Describes resolved issues and known issues and their workarounds for Illumio Flowlink.
Install, Configure, and Upgrade Guides	
24.4 Install, Configure, Upgrade (NEN, VEN, LW-VEN, Kubernetes and Openshift)	A combined installation guide for 24.4 NEN, VEN, Legacy Windows VEN (LW-VEN), Kubernetes and Openshift.
PCE Installation and Upgrade Guide 24.2.10	Provides installation and upgrade information for on-premise PCEs running Core Release 24.2.10, including downgrade, uninstallation, and general troubleshooting information.
PCE Supercluster Guide 24.2.10	Provides deployment information of on-premise PCE Superclusters running Core Release 24.2.10, including management and troubleshooting information.
VEN Installation and Upgrade Guide	
<ul style="list-style-type: none"> • 24.5 • 24.4 • 24.2 	Provides installation and upgrade information for VENs on the hosts in your environment.
NEN Installation and Usage Guide	Learn how to install the Illumio Network Enforcement Node (NEN), configure switches to work with it, and use the NEN to secure workloads that are attached to network switches.

PDF	Description
Illumio Flowlink Configuration and Usage Guide 1.4.0	Learn about Flowlink, an Illumio-provided standalone application to collect network flow data from different network sources, and its configuration and known limitations.
LW-VEN Installation and Configuration Guide	Learn how to install and use the Legacy Windows VEN (LW-VEN) with the Illumio Core PCE to enforce security policies on computers running the Windows Server 2003 SP1 and SP2 or Windows Server 2008 SP1 and SP2 operating system.
Illumio Core for Kubernetes and OpenShift 5.1.x	Describes the deployment, administration, and use of Illumio Core for Kubernetes, formerly known as Illumio Containerized VEN, or C-VEN. Illumio Core for Kubernetes also includes the related required component, Kubelink. Because of this heritage, many references to this product as "C-VEN" are still used throughout the documentation.
Administration Guide	
24.4 Administration Guide	A combined administration guide for 24.4 NEN, VEN, Legacy Windows VEN (LW-VEN), and Kubernetes and Openshift.
Events Administration Guide	Learn how to control the behavior of the PCE as it records events and how to change event-related settings in the PCE web console.
PCE Administration Guide	Learn how to maintain and operate the Policy Compute Engine (PCE). This guide also includes other important tasks required to manage your PCE deployment.
VEN Administration Guide	Learn how to manage the VENs that you have installed on the hosts in your environment. This guide provides information about VEN functionality and explains how to troubleshoot issues with the VENs in your environment.
REST API Developer Guide	
REST API Developer Guide 24.4	Learn about the Illumio Core REST APIs.
REST API Developer Guide 24.2.10	Learn about the Illumio Core REST APIs.
User Guides	
Visualization Guides	Describes the Illumio Core Visualization tools, the problems they solve, some use cases, and examples.
24.4	
24.2.10	
23.5	
23.2	
22.5	
22.2	
21.5	
Security Policy Guide 24.4	Learn about new and updated features in the 24.4 version of the security policy including the policy objects.

PDF	Description
Security Policy Guide 24.2.10	Learn about the Illumio Core security policy including the policy objects. Get guidance about designing a label schema and learn about recommended approaches for Illumio's security policy design including how to create rulesets and rules.
Application Ringfencing	The Application Ringfencing tutorial is divided into a series of lessons. The lessons correspond to the major phases of creating an application ringfence in your environment and are organized according to the workflow for creating an application ringfence.
Using XPress User Guide	Describes how to use the Xpress features to onboard servers and endpoints.
Edge User Guide 22.31	Describes the new features, enhancements, and platform support for the Illumio Edge 22.31.
Managed Services Portal User Guide	Describes how to use MSP to onboard your customers in to Illumio Core, Illumio Xpress, and Illumio Edge in the Illumio Cloud and then manage and administer those Illumio products on their behalf.

PDFs for Older Releases

Guide	Description
CLI Tool Release Notes and Containerized VEN Release Notes	
Illumio Core CLI Tool Release Notes 1.4.2	These release notes describe the new features and enhancements for the Illumio Core Advanced Command-line Interface Tool 1.4.2 release. For more information about the CLI, see the Illumio Core PCE CLI Tool Guide, which describes the installation, setup, usage, and tutorials for the CLI tool.
Illumio Core PCE CLI Tool Guide 1.4.2	This guide provides an overview of the CLI Tool, describes how to install and authenticate it, and provides CLI Tools commands for resources.
Illumio Containerized VEN Release Notes 21.5.15	These release notes describe the resolved issues and known issues for the Illumio Containerized VEN 21.5.15 release.
Kubernetes and OpenShift Release Notes and User Guides	
Illumio Core for Kubernetes Release Notes 3.0.0	This document describes the resolved issues and related information for the 3.0.0 release of Illumio Core for Kubernetes, formerly known as Illumio Containerized VEN, or C-VEN.
Illumio Core for Kubernetes Release Notes 3.1.0	This document describes the resolved issues and related information for the 3.1.0 release of Illumio Core for Kubernetes, formerly known as Illumio Containerized VEN, or C-VEN.
Illumio Core for Kubernetes Release Notes 4.0.0	This document describes the resolved issues and related information for the 4.0.0 release of Illumio Core for Kubernetes, formerly known as Illumio Containerized VEN, or C-VEN.
Illumio Core for Kubernetes Release Notes 4.1.0	This document describes the resolved issues and related information for the 4.1.0 release of Illumio Core for Kubernetes, formerly known as Illumio Containerized VEN, or C-VEN.
Illumio Core for Kubernetes Release Notes 4.2.0	This document describes the resolved issues and related information for the 4.2.0 release of Illumio Core for Kubernetes, formerly known as Illumio Containerized VEN, or C-VEN.
Illumio Core for Kubernetes Release Notes 5.2	These release notes describe the resolved issues, known issues, and related information for the 5.2.x releases of Illumio Core for Kubernetes, formerly known as Illumio Containerized VEN, or C-VEN.
Illumio Core for Kubernetes and OpenShift Guide 4.1	This guide explains how deploy the Illumio Core with Kubernetes or OpenShift on your distributed, on-premises and cloud systems.
Illumio Core for Kubernetes and OpenShift Guide 4.2	This guide explains how deploy the Illumio Core with Kubernetes or OpenShift on your distributed, on-premises and cloud systems.
Kubelink	
Illumio Kubelink Release Notes 2.0.2	These release notes describe the enhancements, resolved, and known issues for the Illumio Kubelink 2.0.2 release.
Illumio Kubelink Release Notes 2.1.1	These release notes describe the enhancements, resolved, and known issues for the Illumio Kubelink 2.1.1 release and earlier releases.
Flowlink	
Illumio Flowlink Release Notes 1.2.2	These release notes describe the enhancements, resolved, and known issues for the Illumio FlowLink 1.2.2 release.
Illumio FlowLink Release Notes 1.3.0	These release notes describe the enhancements, resolved, and known issues for the Illumio FlowLink 1.3.0 release.

Guide	Description
NEN and LW-VEN Installation and Configuration PDFs	
Illumio NEN Installation and Usage Guide 2.3.10	This guide introduces the Illumio Network Enforcement Node and describes how to install and configure it and how to integrate the NEN with load balancers and switches.
Illumio NEN Installation and Usage Guide 2.4.10	This guide introduces the Illumio Network Enforcement Node and describes how to install and configure it and how to integrate the NEN with load balancers and switches.
Illumio NEN Installation and Usage Guide 2.5.2	This guide introduces the Illumio Network Enforcement Node and describes how to install and configure it and how to integrate the NEN with load balancers and switches.
Illumio NEN Installation and Usage Guide 2.6.0	This guide introduces the Illumio Network Enforcement Node and describes how to install and configure it and how to integrate the NEN with load balancers and switches.
Illumio NEN Installation and Usage Guide 2.6.10	This guide introduces the Illumio Network Enforcement Node and describes how to install and configure it and how to integrate the NEN with load balancers and switches.
Illumio NEN Installation and Usage Guide 2.6.30	This guide introduces the Illumio Network Enforcement Node and describes how to install and configure it and how to integrate the NEN with load balancers and switches.
Illumio LW-VEN Installation and Configuration Guide 1.0.10	This guide describes the Illumio LW-VEN requirements and how to install and configure the service.
Illumio LW-VEN Installation and Configuration Guide 1.1.0	This guide describes the Illumio LW-VEN requirements and how to install and configure the service.

Security Advisories

This category includes announcements of security fixes and updates made in critical patch update advisories, security alerts and bulletins.

September 2024 Security Advisories

Here's a list of the security advisories for 2024.

Ruby SAML gem component authentication bypass vulnerability

The Ruby SAML gem is affected by an authentication bypass vulnerability, which impacts the Illumio PCE in both SaaS and on-premises deployments. An authenticated attacker could potentially leverage this vulnerability to authenticate as another SAML user. For SaaS customers, the target user can be in a different org and on a different cluster.

Severity

Critical: CVSS score is 9.9

CVSS: AV:N/AC:L/PR:L/UI:N/S:C/C:H/I:H/A:H

Affected Products and Patch Information

Security vulnerabilities addressed by this Security Alert affect the products listed below.

Table 6. Products Affected by the Security Vulnerability

Affected Products	Affected Versions	Fixed Version
Illumio Core PCE	<= 21.5.36	>= 21.5.37
	<= 22.2.42	>= 22.2.43
	<= 22.5.32	>= 22.5.34
	<= 23.2.30	>= 23.2.31
	<= 23.5.21	>= 23.5.22
	<= 24.2.0	>= 24.2.10

Resolution

Upgrade to the latest release for a given major version.

References

- <https://nvd.nist.gov/vuln/detail/CVE-2024-45409>
- <https://github.com/advisories/GHSA-jw9c-mfg7-9rx2>

Skipped Critical Patch Updates

Illumio strongly recommends that customers apply security patches as soon as possible. For customers that have skipped one or more Critical Patch Updates and are concerned about products that do not have security patches announced in this Critical Patch Update, please review previous Critical Patch Update advisories to determine appropriate actions.

Discovered By

External Security Firm

Frequently Asked Questions

- What software components are affected?
Only the Illumio PCE is impacted by this vulnerability.
- What products did this affect?
This vulnerability impacts the PCE, including Core on-premises deployments, Core SaaS, Endpoint, MSP, and Edge.
- Is Core SaaS affected?
SaaS PCE clusters were impacted. Those environments have been patched.
- I'm using Cloud. Am I impacted?
The Cloud platform is not affected.
- Will the patch affect performance?
The update is not expected to affect performance.
- How can I tell if this vulnerability was used against my on-premises PCE?
Illumio is creating queries that can be used by customers to detect known vectors for exploitation of this vulnerability. Please contact Illumio Support or your account team for assistance. If you suspect this vulnerability was used within your environment, please reach out to Illumio Support.
- Has Illumio investigated if this vulnerability was used on any SaaS PCEs?
Illumio is currently investigating all available data from the production SaaS environment and has so far found no indications that the issue has been exploited.
- I can't apply the patch immediately. How can I mitigate the issue in the meantime?
This vulnerability requires SAML to be enabled on the customer's PCE in order to be exploited. Customers who cannot patch their PCEs immediately, and who wish to mitigate this issue, can choose to disable SAML authentication on the PCE. For details, see the "Authentication" topic in the PCE Administration Guide. Additionally, customers can enable IP restrictions to limit access to only trusted source IPs (for example, for privileged accounts). For details, see the "Configure Access Restrictions and Trusted Proxy IPs" topic in the PCE Administration Guide.
- How long will the upgrade take?
The fix will be provided in a normal code release so this will take the same amount of time as any PCE upgrade.
- Were any Illumio customers impacted by this vulnerability?

Illumio is not aware of any exploitation of this vulnerability within any customer environments.

Modification History

- September, 2024: Initial Publication of CVE

September 2023 Security Advisories

Here's a list of the security advisories for 2023.

Authenticated RCE due to unsafe JSON deserialization

Unsafe deserialization of untrusted JSON allows execution of arbitrary code on affected releases of the Illumio PCE. Authentication to the API is required to exploit this vulnerability. The flaw exists within the `network_traffic` API endpoint. An attacker can leverage this vulnerability to execute code in the context of the PCE's operating system user.

Severity

Critical: CVSS score is 9.9

CVSS:3.1/AV:N/AC:L/PR:L/UI:N/S:C/C:H/I:H/A:H

Affected Products and Patch Information

Security vulnerabilities addressed by this Security Alert affect the products listed below.

Table 7. Products Affected by the Security Vulnerability

Affected Products	Affected Versions	Fixed Version
Illumio Core PCE	<= 19.3.6	>= 19.3.7
	<= 21.2.7	>= 21.2.8
	<= 21.5.35	>= 21.5.36
	<= 22.2.41	>= 22.2.42
	<= 22.5.30	>= 22.5.31
	<= 23.2.10	>= 23.2.11

Resolution

Upgrade to the latest release for a given major version.

References

<https://www.cve.org/CVERecord?id=CVE-2023-5183>

Skipped Critical Patch Updates

Illumio strongly recommends that customers apply security patches as soon as possible. For customers that have skipped one or more Critical Patch Updates and are concerned about products that do not have security patches announced in this Critical Patch Update, please review previous Critical Patch Update advisories to determine appropriate actions.

Discovered By

External Security Firm

Frequently Asked Questions

- What software components are affected?
Only the Illumio PCE is impacted by this vulnerability.
- What products did this affect?
This vulnerability impacts the PCE, including Core on-premises deployments, Core SaaS, Endpoint, MSP, and Edge.
- Is Core SaaS affected?
SaaS PCE clusters were impacted. Those environments have been patched.
- I'm using Cloud. Am I impacted?
The Cloud platform is not affected.
- How can I tell if this vulnerability was used against my on-premises PCE?
Illumio is creating queries that can be used by customers to detect known vectors for exploitation of this vulnerability. Please contact Illumio Support or your account team for assistance. If you suspect this vulnerability was used within your environment, please reach out to Illumio Support.
- Has Illumio investigated if this vulnerability was used on any SaaS PCEs?
Illumio is currently investigating all available data from the production SaaS environment and has so far found no indications that the issue has been exploited.
- I can't apply the patch immediately. How can I mitigate the issue in the meantime?
This vulnerability requires SAML to be enabled on the customer's PCE in order to be exploited. Customers who cannot patch their PCEs immediately, and who wish to mitigate this issue, can choose to disable SAML authentication on the PCE.
- Reference
For details, see the topic Authentication in the PCE Administration Guide.
Additionally, customers can: Enable IP restrictions to limit access to only trusted source IPs (for example, for privileged accounts). For details, see the topic Configure Access Restrictions and Trusted Proxy IPs in the PCE Administration Guide.

- How long will the upgrade take?
The fix will be provided in a normal code release so this will take the same amount of time as any PCE upgrade.
- Were any Illumio customers impacted by this vulnerability?
Illumio is not aware of any exploitation of this vulnerability on any customer environments.

Legal Notice

Copyright © 2025 Illumio 920 De Guigne Drive, Sunnyvale, CA 94085. All rights reserved.

The content in this documentation is provided for informational purposes only and is provided "as is," without warranty of any kind, expressed or implied of Illumio. The content in this documentation is subject to change without notice.

Resources

- [Legal information](#)
- [Trademarks statements](#)
- [Patent statements](#)
- [License statements](#)

Contact Information

- [Contact Illumio](#)
- [Contact Illumio Legal](#)
- [Contact Illumio Documentation](#)