



Illumio Flowlink Release Notes for Release 1.4.0

December 2024

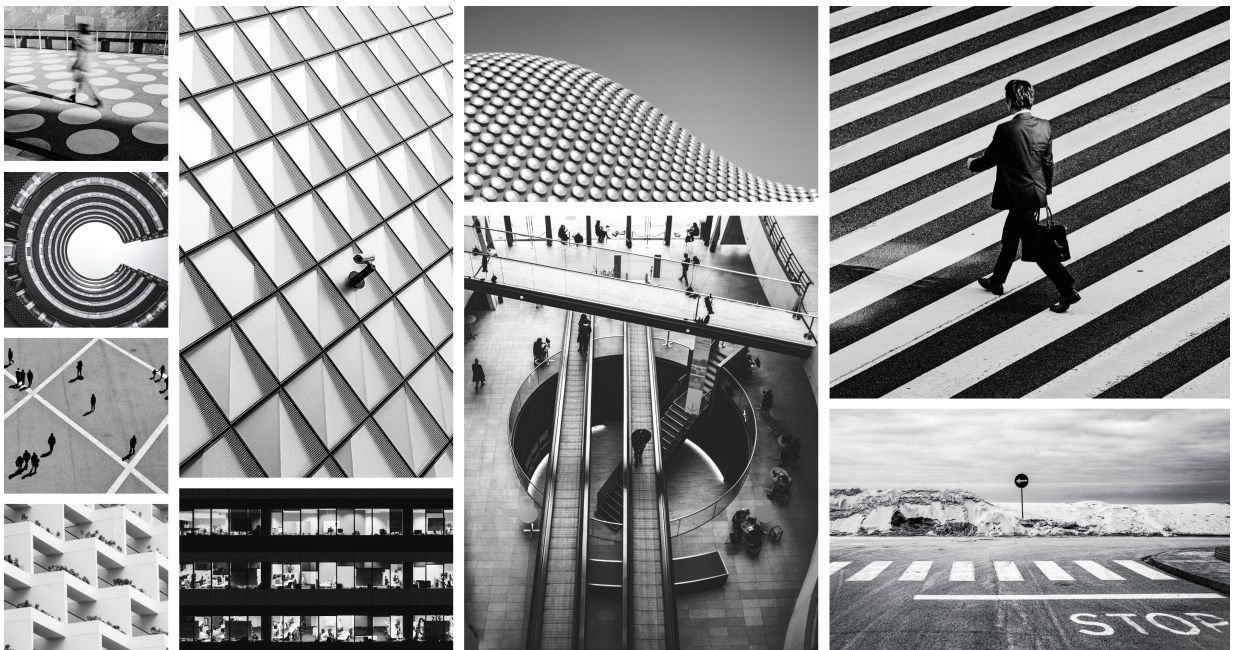


Table of Contents

| | |
|---|---|
| Product Version | 3 |
| New Features in Illumio Flowlink 1.4.0 | 4 |
| Resolved and Known Issues in FlowLink 1.4.0 | 5 |
| Resolved Issue | 5 |
| Known Issue | 5 |

Product Version

Flowlink Version: 1.4.0

Compatible PCE Version: PCE 19.3.0 and later releases

Standard versus LTS Releases

For information about Standard versus Long Term Support (LTS) releases, see [Versions and Compatibility](#) in the Illumio Support portal (log in required).

Illumio Core release numbering uses the following format: “a.b.c-d+e”.

- “a.b”: Standard or LTS release number, for example, “2.2”
- “.c”: Maintenance release number, for example, “.1”
- “-d”: Optional descriptor for pre-release versions, for example, “preview2”

New Features in Illumio Flowlink 1.4.0

The following new features were added in Illumio Flowlink 1.4.0.

- **Support for FIPS compliance on RHEL 9**

Beginning with this release, Flowlink now supports FIPS compliance on RHEL 9. For more information, see [FIPS Compliance for Flowlink](#).

- **Increased buffer size**

Flowlink buffer size is increased to 65kb. This was done to address an issue where FlowLink failed to process large UDP packets.

- **Support for ingesting multiple flow types**

Beginning with this release, the FlowLink text flow collector supports flows with any IP protocol number, not just UDP, TCP and ICMP.

Resolved and Known Issues in FlowLink 1.4.0

Resolved Issue

Flowlink became non-responsive (E-114431)

A parsing issue with the IPFIX packet caused Flowlink 1.3.0 to become non-responsive, requiring a manual restart. This issue is fixed with this release.

Known Issue

No Automatic Restart Following Reboot (E-15146)

Flowlink is not installed as a service, nor does it support a High Availability (HA) configuration. As such, it doesn't restart automatically if the host fails or is rebooted. In those cases, you need to restart Flowlink manually.